

Datasheet for ABIN1882143
anti-TWF2 antibody (C-Term)[Go to Product page](#)

1 Image

2 Publications

Overview

Quantity:	400 µL
Target:	TWF2
Binding Specificity:	AA 320-349, C-Term
Reactivity:	Human
Host:	Rabbit
Clonality:	Polyclonal
Conjugate:	This TWF2 antibody is un-conjugated
Application:	Western Blotting (WB)

Product Details

Immunogen:	This Twinfilin-2 (PTK9L) antibody is generated from rabbits immunized with a KLH conjugated synthetic peptide between 320-349 amino acids from the C-terminal region of human Twinfilin-2 (PTK9L).
Clone:	RB8598
Isotype:	Ig Fraction
Purification:	This antibody is prepared by Saturated Ammonium Sulfate (SAS) precipitation followed by dialysis against PBS.

Target Details

Target:	TWF2
Alternative Name:	Twinfilin-2 (PTK9L) (TWF2 Products)

Target Details

Background:	The protein encoded by this gene was identified by its interaction with the catalytic domain of protein kinase C-zeta. The encoded protein contains an actin-binding site and an ATP-binding site. It is most closely related to twinfilin (PTK9), a conserved actin monomer-binding protein.
Molecular Weight:	39548
NCBI Accession:	NP_009215
UniProt:	Q6IBS0
Pathways:	Regulation of Actin Filament Polymerization , Regulation of Cell Size , Maintenance of Protein Location , Toll-Like Receptors Cascades

Application Details

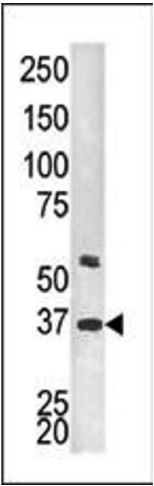
Application Notes:	WB: 1:1000
Restrictions:	For Research Use only

Handling

Format:	Liquid
Buffer:	Purified polyclonal antibody supplied in PBS with 0.09 % (W/V) sodium azide.
Preservative:	Sodium azide
Precaution of Use:	This product contains Sodium azide: a POISONOUS AND HAZARDOUS SUBSTANCE which should be handled by trained staff only.
Storage:	4 °C,-20 °C
Expiry Date:	6 months

Publications

Product cited in:	Rzadzinska, Nevalainen, Prosser, Lappalainen, Steel: "MyosinVIIa interacts with Twinfilin-2 at the tips of mechanosensory stereocilia in the inner ear." in: PLoS ONE , Vol. 4, Issue 9, pp. e7097, (2009) (PubMed).
	Rohwer, Kittstein, Marks, Gschwendt: "Cloning, expression and characterization of an A6-related protein." in: European journal of biochemistry / FEBS , Vol. 263, Issue 2, pp. 518-25, (1999) (PubMed).



Western Blotting

Image 1. The anti-PTK9L Pab (ABIN1882143 and ABIN2841318) is used in Western blot to detect PTK9L in HEPG2 tissue lysate.