

Datasheet for ABIN1882154
anti-YWHAB antibody (N-Term)

3 Images

8 Publications

[Go to Product page](#)

Overview

Quantity:	400 µL
Target:	YWHAB
Binding Specificity:	AA 56-85, N-Term
Reactivity:	Human
Host:	Rabbit
Clonality:	Polyclonal
Conjugate:	This YWHAB antibody is un-conjugated
Application:	Western Blotting (WB), Immunohistochemistry (Paraffin-embedded Sections) (IHC (p))

Product Details

Immunogen:	This YWHAB antibody is generated from rabbits immunized with a KLH conjugated synthetic peptide between 56-85 amino acids from the N-terminal region of human YWHAB.
Clone:	RB4062
Isotype:	Ig Fraction
Predicted Reactivity:	B, Pr, M, Rat
Purification:	This antibody is prepared by Saturated Ammonium Sulfate (SAS) precipitation followed by dialysis against PBS.

Target Details

Target:	YWHAB
---------	-------

Target Details

Alternative Name:	YWHAB (YWHAB Products)
Background:	YWHAB belongs to the 14-3-3 family of proteins, members of which mediate signal transduction by binding to phosphoserine-containing proteins. This highly conserved protein family is found in both plants and mammals. The encoded protein has been shown to interact with RAF1 and CDC25 phosphatases, suggesting that it may play a role in linking mitogenic signaling and the cell cycle machinery. Two transcript variants differing in the 5' UTR, but encoding the same protein, have been identified for the gene. Both variants encode the same protein, however, they are differentially expressed in hematopoietic cells.
Molecular Weight:	28082
NCBI Accession:	NP_003395 , NP_647539
UniProt:	P31946
Pathways:	Fc-epsilon Receptor Signaling Pathway , EGFR Signaling Pathway , Neurotrophin Signaling Pathway , Myometrial Relaxation and Contraction , Maintenance of Protein Location

Application Details

Application Notes:	WB: 1:1000. WB: 1:1000. IHC-P: 1:50~100
Restrictions:	For Research Use only

Handling

Format:	Liquid
Buffer:	Purified polyclonal antibody supplied in PBS with 0.09 % (W/V) sodium azide.
Preservative:	Sodium azide
Precaution of Use:	This product contains Sodium azide: a POISONOUS AND HAZARDOUS SUBSTANCE which should be handled by trained staff only.
Storage:	4 °C, -20 °C
Expiry Date:	6 months

Publications

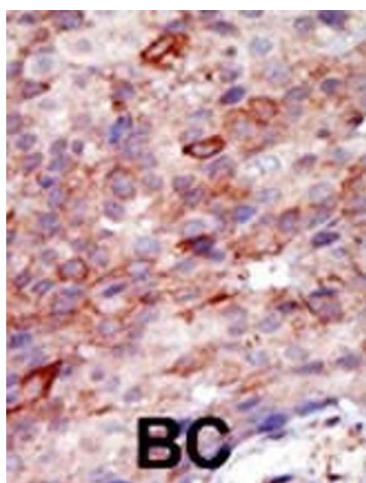
Product cited in:	Carrascal, Ovelleiro, Casas, Gay, Abian: "Phosphorylation analysis of primary human T lymphocytes using sequential IMAC and titanium oxide enrichment." in: Journal of proteome research , Vol. 7, Issue 12, pp. 5167-76, (2009) (PubMed).
-------------------	---

Koulich, Li, DeMartino: "Relative structural and functional roles of multiple deubiquitylating proteins associated with mammalian 26S proteasome." in: **Molecular biology of the cell**, Vol. 19, Issue 3, pp. 1072-82, (2008) ([PubMed](#)).

Reuter, Medhurst, Waisfisz, Zhi, Herterich, Hoehn, Gross, Joenje, Hoatlin, Mathew, Huber: "Yeast two-hybrid screens imply involvement of Fanconi anemia proteins in transcription regulation, cell signaling, oxidative metabolism, and cellular transport." in: **Experimental cell research**, Vol. 289, Issue 2, pp. 211-21, (2003) ([PubMed](#)).

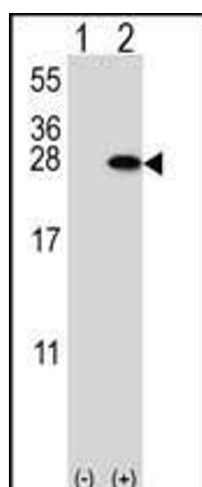
There are more publications referencing this product on: [Product page](#)

Images



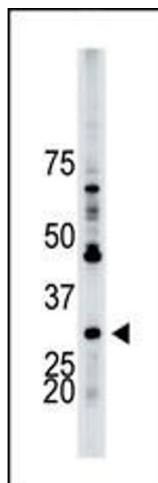
Immunohistochemistry (Paraffin-embedded Sections)

Image 1. Formalin-fixed and paraffin-embedded human cancer tissue reacted with the primary antibody, which was peroxidase-conjugated to the secondary antibody, followed by DAB staining. This data demonstrates the use of this antibody for immunohistochemistry, clinical relevance has not been evaluated. BC = breast carcinoma, HC = hepatocarcinoma.



Western Blotting

Image 2. Western blot analysis of YWHAB (arrow) using rabbit polyclonal YWHAB Antibody (T71) (ABIN1882154 and ABIN2842225). 293 cell lysates (2 µg/lane) either nontransfected (Lane 1) or transiently transfected (Lane 2) with the YWHAB gene.



Western Blotting

Image 3. The anti-YWHAB Pab (ABIN1882154 and ABIN2842225) is used in Western blot to detect YWHAB in HL-60 cell lysate.