

Datasheet for ABIN1882162
anti-ATP1A1 antibody (AA 1-30)



[Go to Product page](#)

1 Image **3** Publications

Overview

Quantity:	400 µL
Target:	ATP1A1
Binding Specificity:	AA 1-30
Reactivity:	Rat
Host:	Rabbit
Clonality:	Polyclonal
Conjugate:	This ATP1A1 antibody is un-conjugated
Application:	Western Blotting (WB)

Product Details

Immunogen:	This Rat Atp1a1 antibody is generated from a rabbit immunized with a KLH conjugated synthetic peptide between 1-30 amino acids from Rat Atp1a1.
Clone:	RB43781
Isotype:	Ig Fraction
Purification:	This antibody is purified through a protein A column, followed by peptide affinity purification.

Target Details

Target:	ATP1A1
Alternative Name:	Atp1a1 (ATP1A1 Products)
Background:	This is the catalytic component of the active enzyme, which catalyzes the hydrolysis of ATP

Target Details

coupled with the exchange of sodium and potassium ions across the plasma membrane. This action creates the electrochemical gradient of sodium and potassium ions, providing the energy for active transport of various nutrients.

Molecular Weight: 113054

UniProt: [P06685](#)

Pathways: [Thyroid Hormone Synthesis](#), [Regulation of Hormone Metabolic Process](#), [Regulation of Hormone Biosynthetic Process](#), [Proton Transport](#), [Ribonucleoside Biosynthetic Process](#)

Application Details

Application Notes: WB: 1:1000

Restrictions: For Research Use only

Handling

Format: Liquid

Buffer: Purified polyclonal antibody supplied in PBS with 0.09 % (W/V) sodium azide.

Preservative: Sodium azide

Precaution of Use: This product contains Sodium azide: a POISONOUS AND HAZARDOUS SUBSTANCE which should be handled by trained staff only.

Storage: 4 °C,-20 °C

Expiry Date: 6 months

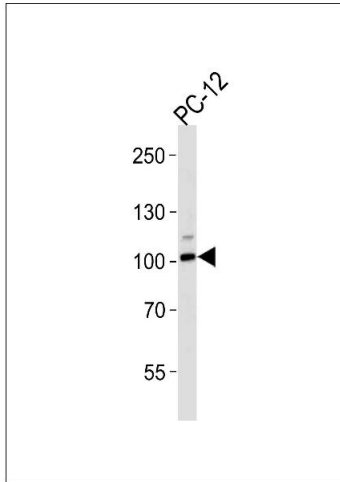
Publications

Product cited in: Hara, Urayama, Kawakami, Nojima, Nagamune, Kojima, Ohta, Nagano, Nakao: "Primary structures of two types of alpha-subunit of rat brain Na⁺,K⁺-ATPase deduced from cDNA sequences." in: **Journal of biochemistry**, Vol. 102, Issue 1, pp. 43-58, (1987) ([PubMed](#)).

Herrera, Emanuel, Ruiz-Opazo, Levenson, Nadal-Ginard: "Three differentially expressed Na,K-ATPase alpha subunit isoforms: structural and functional implications." in: **The Journal of cell biology**, Vol. 105, Issue 4, pp. 1855-65, (1987) ([PubMed](#)).

Shull, Greeb, Lingrel: "Molecular cloning of three distinct forms of the Na⁺,K⁺-ATPase alpha-

Images



Western Blotting

Image 1. Western blot analysis of lysate from PC-12 cell line, using Rat Atp1a1 Antibody (S23) (ABIN1882162 and ABIN2838487). (ABIN1882162 and ABIN2838487) was diluted at 1:1000 at each lane. A goat anti-rabbit IgG H&L(HRP) at 1:5000 dilution was used as the secondary antibody. Lysate at 35 µg per lane.