

Datasheet for ABIN1882164
anti-Aurora Kinase C antibody (N-Term)[2 Images](#)[3 Publications](#)[Go to Product page](#)

Overview

Quantity:	400 µL
Target:	Aurora Kinase C (AURKC)
Binding Specificity:	AA 3-38, N-Term
Reactivity:	Human
Host:	Rabbit
Clonality:	Polyclonal
Application:	Western Blotting (WB)

Product Details

Immunogen:	This Aurora-C antibody is generated from rabbits immunized with a KLH conjugated synthetic peptide between 3-38 amino acids from the N-terminal region of human Aurora-C.
Clone:	RB6507
Isotype:	Ig Fraction
Purification:	This antibody is prepared by Saturated Ammonium Sulfate (SAS) precipitation followed by dialysis against PBS.

Target Details

Target:	Aurora Kinase C (AURKC)
Alternative Name:	Aurora-C (AURKC Products)
Background:	Chromosomal segregation during mitosis as well as meiosis is regulated by kinases and phosphatases. The Aurora kinases, members of the Ser/Thr protein kinase family, associate

Target Details

with microtubules during chromosome movement and segregation. Aurora kinase C may play a part in organizing microtubules in relation to the function of the centrosome/spindle pole during mitosis. This protein is localized to centrosome from anaphase to cytokinesis. Expression is limited to testis in normal cells. Elevated expression levels are seen only in a subset of cancer cells such as HepG2, HuH7 and HeLa cells. Aurora-C expression is maximum at M phase.

Molecular Weight: 35591

NCBI Accession: [NP_001015878](#), [NP_001015879](#), [NP_003151](#)

UniProt: [Q9UQB9](#)

Pathways: [Cell Division Cycle](#), [Maintenance of Protein Location](#)

Application Details

Application Notes: WB: 1:1000. WB: 1:1000

Restrictions: For Research Use only

Handling

Format: Liquid

Buffer: Purified polyclonal antibody supplied in PBS with 0.09 % (W/V) sodium azide.

Preservative: Sodium azide

Precaution of Use: This product contains Sodium azide: a POISONOUS AND HAZARDOUS SUBSTANCE which should be handled by trained staff only.

Storage: 4 °C,-20 °C

Expiry Date: 6 months

Publications

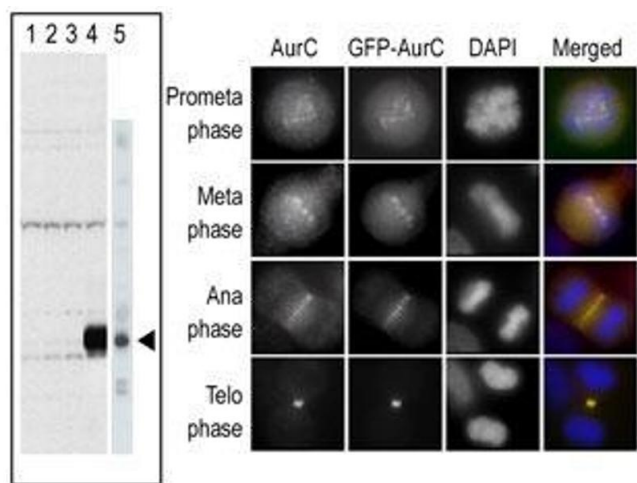
Product cited in: Kimura, Matsuda, Yoshioka, Okano: "Cell cycle-dependent expression and centrosome localization of a third human aurora/lpl1-related protein kinase, AIK3." in: **The Journal of biological chemistry**, Vol. 274, Issue 11, pp. 7334-40, (1999) ([PubMed](#)).

Tseng, Chen, Hsu, Tang: "Protein kinase profile of sperm and eggs: cloning and characterization of two novel testis-specific protein kinases (AIE1, AIE2) related to yeast and fly chromosome segregation regulators." in: **DNA and cell biology**, Vol. 17, Issue 10, pp. 823-33, (1998) ([PubMed](#))

).

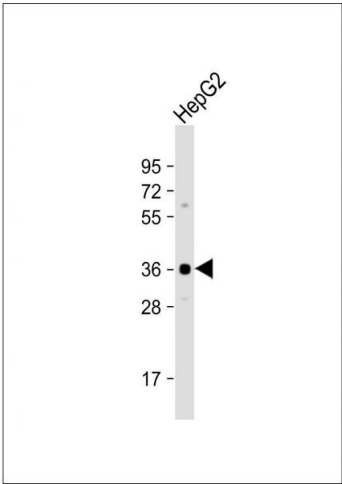
Bernard, Sanseau, Henry, Couturier, Prigent: "Cloning of STK13, a third human protein kinase related to Drosophila aurora and budding yeast Ipl1 that maps on chromosome 19q13.3-ter." in: **Genomics**, Vol. 53, Issue 3, pp. 406-9, (1998) ([PubMed](#)).

Images



Western Blotting

Image 1. The anti-Aurora C Pab (ABIN1882164 and ABIN2841162) is used in Western blot to detect Aurora C in lysates of 293 cells expressing Flag tag (lane 1), Flag-tagged Aurora A (lane 2), Flag-tagged Aurora B (lane 3), Flag-tagged Aurora C (lane 4), and in cell lysate. In the immunofluorescence experiment, staining of HeLa cells expressing GFP-Aurora C is performed at different cellular mitotic stages with the anti-Aurora C Pab as primary antibody (column A), GFP fluorescence (column B), DI nuclear staining (column C), and anti-Aurora C merged to DI staining (column D). Data with Flagged Aurora is kindly provided by Drs. K. Sasai and S. Sen from the University of Texas MD Anderson Cancer Center (Houston, TX).



Western Blotting

Image 2. Anti-Aurora-C Antibody (N-term) at 1:1000 dilution + HepG2 whole cell lysate Lysates/proteins at 20 µg per lane. Secondary Goat Anti-Rabbit IgG, (H+L), Peroxidase conjugated at 1/10000 dilution. Predicted band size : 36 kDa Blocking/Dilution buffer: 5 % NFDm/TBST.