

Datasheet for ABIN1882165  
**anti-CDC7 antibody (N-Term)**[Go to Product page](#)[2 Images](#)[3 Publications](#)

## Overview

Quantity:	400 µL
Target:	CDC7
Binding Specificity:	AA 1-30, N-Term
Reactivity:	Human
Host:	Rabbit
Clonality:	Polyclonal
Conjugate:	This CDC7 antibody is un-conjugated
Application:	Western Blotting (WB)

## Product Details

Immunogen:	This CDC7 (CDC7L1) antibody is generated from rabbits immunized with a KLH conjugated synthetic peptide between 1-30 amino acids from the N-terminal region of human CDC7 (CDC7L1).
Clone:	RB3541
Isotype:	Ig Fraction
Purification:	This antibody is purified through a protein A column, followed by peptide affinity purification.

## Target Details

Target:	CDC7
Alternative Name:	CDC7 (CDC7L1) ( <a href="#">CDC7 Products</a> )

## Target Details

Background:	CDC7L1 is predominantly localized in the nucleus and is a cell division cycle protein with kinase activity. Although expression levels of the protein appear to be constant throughout the cell cycle, the protein kinase activity appears to increase during S phase. It has been suggested that the protein is essential for initiation of DNA replication and that it plays a role in regulating cell cycle progression. Overexpression of this gene product may be associated with neoplastic transformation for some tumors.
Molecular Weight:	63888
NCBI Accession:	<a href="#">NP_001127891</a> , <a href="#">NP_001127892</a> , <a href="#">NP_003494</a>
UniProt:	<a href="#">O00311</a>
Pathways:	<a href="#">Mitotic G1-G1/S Phases</a> , <a href="#">DNA Replication</a>

## Application Details

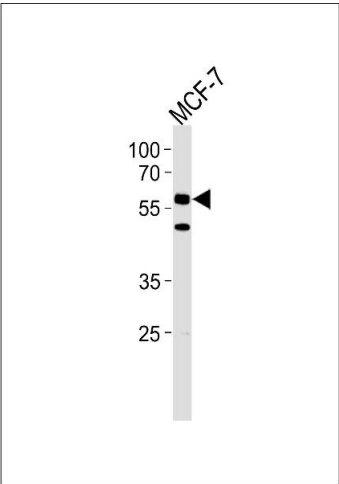
Application Notes:	WB: 1:1000. WB: 1:1000
Restrictions:	For Research Use only

## Handling

Format:	Liquid
Buffer:	Purified polyclonal antibody supplied in PBS with 0.09 % (W/V) sodium azide.
Preservative:	Sodium azide
Precaution of Use:	This product contains Sodium azide: a POISONOUS AND HAZARDOUS SUBSTANCE which should be handled by trained staff only.
Storage:	4 °C, -20 °C
Expiry Date:	6 months

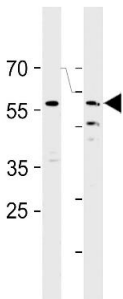
## Publications

Product cited in:	Hirakawa, Nakayama, Shibata, Sekine: "Association of cellular localization of glycogen synthase kinase 3beta in the digestive tract with cancer development." in: <b>Oncology reports</b> , Vol. 22, Issue 3, pp. 481-5, (2009) ( <a href="#">PubMed</a> ).
-------------------	---



Western Blotting

**Image 1.** HCDC7L1 Antibody (M9) (ABIN1882165 and ABIN2841618) western blot analysis in MCF-7 cell line lysates (35 µg/lane). This demonstrates the HCDC7L1 antibody detected the HCDC7L1 protein (arrow).



Western Blotting

**Image 2.** HCDC7L1 Antibody (M9) (ABIN1882165 and ABIN2841618) western blot analysis in HT29, MCF-7 cell line lysates (35 µg/lane). This demonstrates the HCDC7L1 antibody detected the HCDC7L1 protein (arrow).