



Datasheet for ABIN1882167  
**anti-Esterase D antibody (AA 68-102)**



[Go to Product page](#)

1 Image

2 Publications

### Overview

Quantity:	400 µL
Target:	Esterase D (ESD)
Binding Specificity:	AA 68-102
Reactivity:	Human, Mouse, Rat
Host:	Rabbit
Clonality:	Polyclonal
Application:	Western Blotting (WB)

### Product Details

Immunogen:	This ESD antibody is generated from a rabbit immunized with a KLH conjugated synthetic peptide between 68-102 amino acids from the Central region of human ESD.
Clone:	RB47739
Isotype:	Ig Fraction
Predicted Reactivity:	Pig
Purification:	This antibody is purified through a protein A column, followed by peptide affinity purification.

### Target Details

Target:	Esterase D (ESD)
Alternative Name:	ESD ( <a href="#">ESD Products</a> )
Background:	Serine hydrolase involved in the detoxification of formaldehyde.

## Target Details

---

Molecular Weight: 31463

UniProt: [P10768](#)

## Application Details

---

Application Notes: WB: 1:1000

Restrictions: For Research Use only

## Handling

---

Format: Liquid

Buffer: Purified polyclonal antibody supplied in PBS with 0.09 % (W/V) sodium azide.

Preservative: Sodium azide

Precaution of Use: This product contains Sodium azide: a POISONOUS AND HAZARDOUS SUBSTANCE which should be handled by trained staff only.

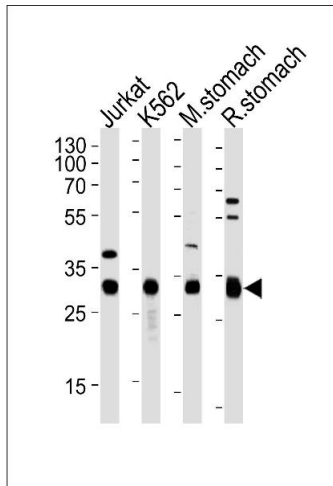
Storage: 4 °C, -20 °C

Expiry Date: 6 months

## Publications

---

Product cited in: Mei, Li, Chu, Yiu, Lo: "The inhibitory effects of silver diamine fluoride at different concentrations on matrix metalloproteinases." in: **Dental materials : official publication of the Academy of Dental Materials**, Vol. 28, Issue 8, pp. 903-8, (2012) ([PubMed](#)).



### Western Blotting

**Image 1.** Western blot analysis of lysates from Jurkat, K562 cell line, mouse stomach and rat stomach tissue (from left to right), using ESD Antibody (Center) (ABIN1882167 and ABIN2838493). (ABIN1882167 and ABIN2838493) was diluted at 1:1000 at each lane. A goat anti-rabbit(HRP) at 1:5000 dilution was used as the secondary antibody. Lysates at 35 µg per lane.