

Datasheet for ABIN1882170
anti-IQCF6 antibody (N-Term)[Go to Product page](#)[1 Image](#)[1 Publication](#)

Overview

Quantity:	400 µL
Target:	IQCF6
Binding Specificity:	AA 1-30, N-Term
Reactivity:	Human
Host:	Rabbit
Clonality:	Polyclonal
Conjugate:	This IQCF6 antibody is un-conjugated
Application:	Western Blotting (WB)

Product Details

Immunogen:	This IQCF6 antibody is generated from a rabbit immunized with a KLH conjugated synthetic peptide between 1-30 amino acids from the N-terminal region of human IQCF6.
Clone:	RB44735
Isotype:	Ig Fraction
Purification:	This antibody is purified through a protein A column, followed by peptide affinity purification.

Target Details

Target:	IQCF6
Alternative Name:	IQCF6 (IQCF6 Products)
Molecular Weight:	13059

Target Details

UniProt: [A8MYZ5](#)

Application Details

Application Notes: WB: 1:1000

Restrictions: For Research Use only

Handling

Format: Liquid

Buffer: Purified polyclonal antibody supplied in PBS with 0.09 % (W/V) sodium azide.

Preservative: Sodium azide

Precaution of Use: This product contains Sodium azide: a POISONOUS AND HAZARDOUS SUBSTANCE which should be handled by trained staff only.

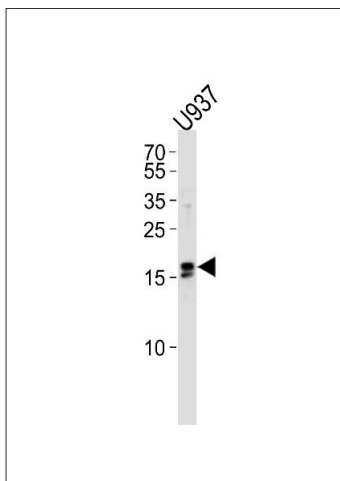
Storage: 4 °C,-20 °C

Expiry Date: 6 months

Publications

Product cited in: Mishra, Chandravanshi, Trigun, Krishnamurthy: "Ambroxol modulates 6-Hydroxydopamine-induced temporal reduction in Glucocerebrosidase (GCase) enzymatic activity and Parkinson's disease symptoms." in: **Biochemical pharmacology**, Vol. 155, pp. 479-493, (2019) ([PubMed](#)).

Images



Western Blotting

Image 1. Western blot analysis of lysate from cell line, using IQCF6 Antibody (N-term) (ABIN1882170 and ABIN2838488). (ABIN1882170 and ABIN2838488) was diluted at 1:1000 at each lane. A goat anti-rabbit IgG H&L(HRP) at 1:5000 dilution was used as the secondary antibody. Lysate at 35 µg per lane.