

Datasheet for ABIN1882175
anti-ERK2 antibody (C-Term)

3 Images

5 Publications

[Go to Product page](#)

Overview

Quantity:	400 µL
Target:	ERK2 (MAPK1)
Binding Specificity:	AA 316-345, C-Term
Reactivity:	Human
Host:	Rabbit
Clonality:	Polyclonal
Conjugate:	This ERK2 antibody is un-conjugated
Application:	Western Blotting (WB), Immunohistochemistry (Paraffin-embedded Sections) (IHC (p)), Flow Cytometry (FACS)

Product Details

Immunogen:	This MAPK1 antibody is generated from rabbits immunized with a KLH conjugated synthetic peptide between 316-345 amino acids from the C-terminal region of human MAPK1.
Clone:	RB11608
Isotype:	Ig Fraction
Predicted Reactivity:	B, M, Rat
Purification:	This antibody is purified through a protein A column, followed by peptide affinity purification.

Target Details

Target:	ERK2 (MAPK1)
---------	--------------

Target Details

Alternative Name:	MAPK1 (MAPK1 Products)
Background:	MAPK1 is a member of the MAP kinase family. MAP kinases, also known as extracellular signal-regulated kinases (ERKs), act as an integration point for multiple biochemical signals, and are involved in a wide variety of cellular processes such as proliferation, differentiation, transcription regulation and development. The activation of this kinase requires its phosphorylation by upstream kinases. Upon activation, this kinase translocates to the nucleus of the stimulated cells, where it phosphorylates nuclear targets.
Molecular Weight:	41390
NCBI Accession:	NP_002736 , NP_620407
UniProt:	P28482
Pathways:	MAPK Signaling , RTK Signaling , Apoptosis , Interferon-gamma Pathway , Fc-epsilon Receptor Signaling Pathway , Response to Growth Hormone Stimulus , Activation of Innate immune Response , Cellular Response to Molecule of Bacterial Origin , Hepatitis C , Protein targeting to Nucleus , Toll-Like Receptors Cascades , Monocarboxylic Acid Catabolic Process , Autophagy , G-protein mediated Events , Signaling Events mediated by VEGFR1 and VEGFR2 , Signaling of Hepatocyte Growth Factor Receptor , VEGFR1 Specific Signals , BCR Signaling , S100 Proteins

Application Details

Application Notes:	WB: 1:1000. IHC-P: 1:50~100. FC: 1:10~50
Restrictions:	For Research Use only

Handling

Format:	Liquid
Buffer:	Purified polyclonal antibody supplied in PBS with 0.09 % (W/V) sodium azide.
Preservative:	Sodium azide
Precaution of Use:	This product contains Sodium azide: a POISONOUS AND HAZARDOUS SUBSTANCE which should be handled by trained staff only.
Storage:	4 °C, -20 °C
Expiry Date:	6 months

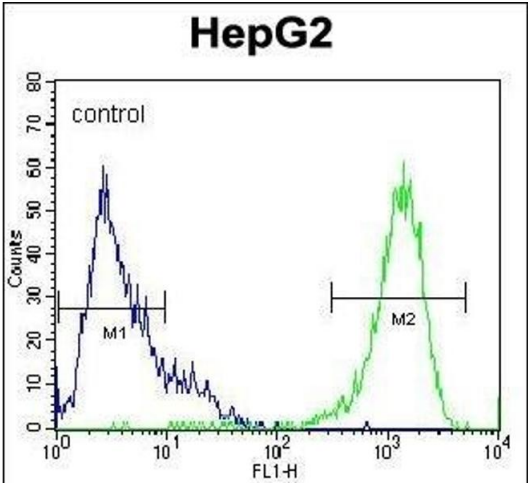
Publications

Product cited in:

Guzel, Yazici, Pek, Doganay, Simsek, Saglam, Turan, Yazici: "Atrial natriuretic peptide and posterior pituitary neurohormone changes in patients with acute schizophrenia." in: **Neuropsychiatric disease and treatment**, Vol. 14, pp. 1855-1860, (2018) ([PubMed](#)).

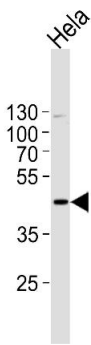
Yuksel, Ital, Balaban, Kocak, Seven, Kucur, Erbakirci, Keskin: "Immediate breastfeeding and skin-to-skin contact during cesarean section decreases maternal oxidative stress, a prospective randomized case-controlled study." in: **The journal of maternal-fetal & neonatal medicine**, Vol. 29, Issue 16, pp. 2691-6, (2017) ([PubMed](#)).

Images



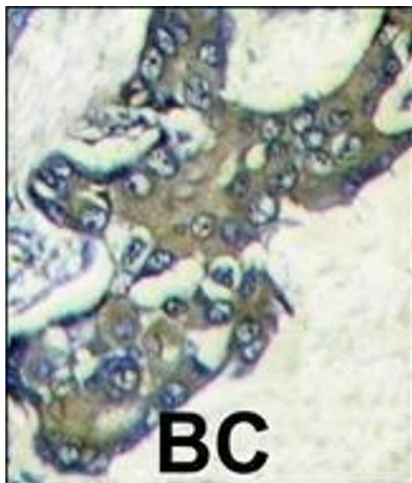
Flow Cytometry

Image 1. PK1 Antibody (C-term) (ABIN1882175 and ABIN2841383) flow cytometric analysis of HepG2 cells (right histogram) compared to a negative control cell (left histogram). FITC-conjugated goat-anti-rabbit secondary antibodies were used for the analysis.



Western Blotting

Image 2. PK1 Antibody (C-term) (ABIN1882175 and ABIN2841383) western blot analysis in Hela cell line lysates (35 µg/lane). This demonstrates the PK1 antibody detected the PK1 protein (arrow).



Immunohistochemistry (Paraffin-embedded Sections)

Image 3. Forlin-fixed and paraffin-embedded human breast carcinoma tissue reacted with PK1 Antibody (C-term) (ABIN1882175 and ABIN2841383), which was peroxidase-conjugated to the secondary antibody, followed by DAB staining. This data demonstrates the use of this antibody for immunohistochemistry, clinical relevance has not been evaluated.