



[Go to Product page](#)

Datasheet for ABIN1882180
anti-PCK1 antibody (C-Term)

5 Images

8 Publications

Overview

Quantity:	400 µL
Target:	PCK1
Binding Specificity:	AA 592-622, C-Term
Reactivity:	Human, Mouse, Rat
Host:	Rabbit
Clonality:	Polyclonal
Conjugate:	This PCK1 antibody is un-conjugated
Application:	Western Blotting (WB), Immunohistochemistry (Paraffin-embedded Sections) (IHC (p)), Immunofluorescence (IF)

Product Details

Immunogen:	This PCK1 antibody is generated from rabbits immunized with a KLH conjugated synthetic peptide between 592-622 amino acids from the C-terminal region of human PCK1.
Clone:	RB03646
Isotype:	Ig Fraction
Purification:	This antibody is purified through a protein A column, followed by peptide affinity purification.

Target Details

Target:	PCK1
Alternative Name:	PCK1 (PCK1 Products)

Target Details

Background:	This gene is a main control point for the regulation of gluconeogenesis. The cytosolic enzyme encoded by this gene, along with GTP, catalyzes the formation of phosphoenolpyruvate from oxaloacetate, with the release of carbon dioxide and GDP. The expression of this gene can be regulated by insulin, glucocorticoids, glucagon, cAMP, and diet. A mitochondrial isozyme of the encoded protein also has been characterized.
Molecular Weight:	69195
NCBI Accession:	NP_002582
UniProt:	P35558
Pathways:	Positive Regulation of Peptide Hormone Secretion , Carbohydrate Homeostasis

Application Details

Application Notes:	IF: 1:10~50. WB: 1:1000. WB: 1:1000. WB: 1:2000. IHC-P-Leica: 1:250
Restrictions:	For Research Use only

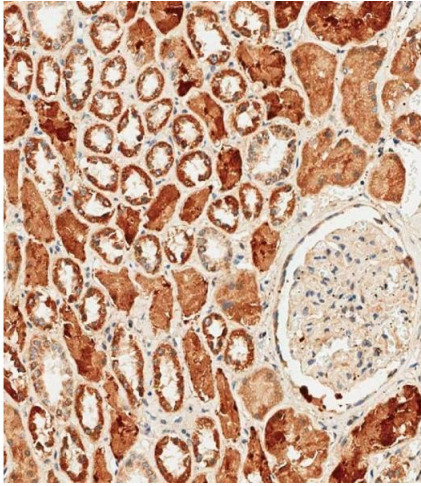
Handling

Format:	Liquid
Buffer:	Purified polyclonal antibody supplied in PBS with 0.09 % (W/V) sodium azide.
Preservative:	Sodium azide
Precaution of Use:	This product contains Sodium azide: a POISONOUS AND HAZARDOUS SUBSTANCE which should be handled by trained staff only.
Storage:	4 °C,-20 °C
Expiry Date:	6 months

Publications

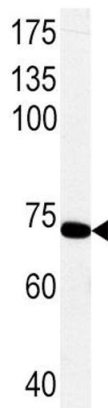
Product cited in:	Hirakawa, Nakayama, Shibata, Sekine: "Association of cellular localization of glycogen synthase kinase 3beta in the digestive tract with cancer development." in: Oncology reports , Vol. 22, Issue 3, pp. 481-5, (2009) (PubMed).
-------------------	---

There are more publications referencing this product on: [Product page](#)



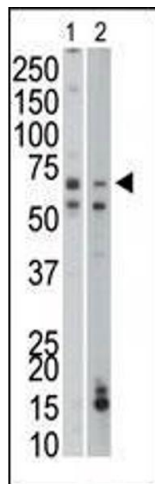
Immunohistochemistry (Paraffin-embedded Sections)

Image 1. Immunohistochemical analysis of paraffin-embedded human kidney tissue using B performed on the Leica® BOND RXm. Samples were incubated with primary Antibody (1/250) for 1 hours at room temperature. A undiluted biotinylated CRF Anti-Polyvalent HRP Polymer antibody was used as the secondary antibody.



Western Blotting

Image 2. Western blot analysis of PCK1 Antibody (C-term) (ABIN1882180 and ABIN2842170) in rat primary hepatocyte cell line lysates. PCK1 (arrow) was detected using the purified Pab.



Western Blotting

Image 3. The anti-PCK1 Pab (ABIN1882180 and ABIN2842170) is used in Western blot to detect PCK1 in mouse liver (Lane 1) and mouse small intestine tissue lysates (Lane 2).

Please check the [product details page](#) for more images. Overall 5 images are available for ABIN1882180.