

Datasheet for ABIN1882186
anti-Sonic Hedgehog antibody (AA 151-162)[Go to Product page](#)**1** Image**4** Publications

Overview

Quantity:	400 µL
Target:	Sonic Hedgehog (SHH)
Binding Specificity:	AA 151-162
Reactivity:	Zebrafish (Danio rerio)
Host:	Rabbit
Clonality:	Polyclonal
Application:	Western Blotting (WB)

Product Details

Immunogen:	This shha antibody is generated from a rabbit immunized with a KLH conjugated synthetic peptide between 151-162 amino acids from the Central region of DANRE shha.
Clone:	RB46723
Purification:	This antibody is purified through a protein A column, followed by peptide affinity purification.

Target Details

Target:	Sonic Hedgehog (SHH)
Alternative Name:	shha (SHH Products)
Background:	Intercellular signal essential for a variety of patterning events during development. Signal produced by the notochord that induces somite patterning, dorso-ventral patterning of the brain and early patterning of the developing eyes. Displays floor plate-inducing activity. Binds to the patched (PTC) receptor, which functions in association with smoothened (SMO), to activate the

Target Details

	transcription of target genes. In the absence of SHH, PTC represses the constitutive signaling activity of SMO (By similarity).
Molecular Weight:	46403
UniProt:	Q92008
Pathways:	Hedgehog Signaling , Dopaminergic Neurogenesis , Regulation of Muscle Cell Differentiation , Tube Formation , Skeletal Muscle Fiber Development

Application Details

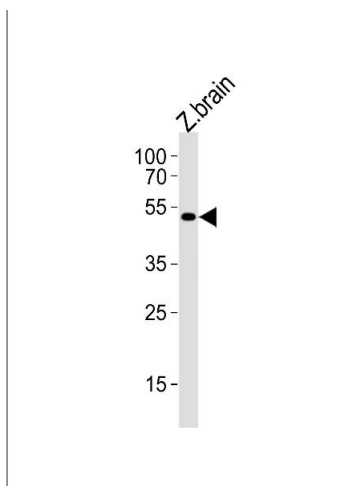
Application Notes:	WB: 1:1000
Restrictions:	For Research Use only

Handling

Format:	Liquid
Buffer:	Purified polyclonal antibody supplied in PBS with 0.09 % (W/V) sodium azide.
Preservative:	Sodium azide
Precaution of Use:	This product contains Sodium azide: a POISONOUS AND HAZARDOUS SUBSTANCE which should be handled by trained staff only.
Storage:	4 °C,-20 °C
Expiry Date:	6 months

Publications

Product cited in:	Mei, Li, Chu, Yiu, Lo: "The inhibitory effects of silver diamine fluoride at different concentrations on matrix metalloproteinases." in: Dental materials : official publication of the Academy of Dental Materials , Vol. 28, Issue 8, pp. 903-8, (2012) (PubMed).
-------------------	--



Western Blotting

Image 1. Shha Antibody (Center) Azb10041a western blot analysis in zebrafish brain tissue lysate (35 µg/lane). This demonstrates that the (DANRE) shha antibody detected zebrafish shha protein (arrow).