

Datasheet for ABIN1882188
anti-UCHL1 antibody (C-Term)

6 Images

3 Publications

[Go to Product page](#)

Overview

Quantity:	400 µL
Target:	UCHL1
Binding Specificity:	AA 187-216, C-Term
Reactivity:	Human, Rat, Mouse
Host:	Rabbit
Clonality:	Polyclonal
Conjugate:	This UCHL1 antibody is un-conjugated
Application:	Western Blotting (WB), Immunofluorescence (IF), Immunohistochemistry (Paraffin-embedded Sections) (IHC (p)), Flow Cytometry (FACS)

Product Details

Immunogen:	This UCHL1 antibody is generated from rabbits immunized with a KLH conjugated synthetic peptide between 187-216 amino acids from the C-terminal region of human UCHL1.
Clone:	RB7379
Isotype:	Ig Fraction
Predicted Reactivity:	B, Hs, Pr, Pig
Purification:	This antibody is purified through a protein A column, followed by peptide affinity purification.

Target Details

Target:	UCHL1
---------	-------

Target Details

Alternative Name:	UCHL1 (UCHL1 Products)
Background:	UCHL1 is a member of a gene family whose products hydrolyze small C-terminal adducts of ubiquitin to generate the ubiquitin monomer. Expression of UCHL1 is highly specific to neurons and to cells of the diffuse neuroendocrine system and their tumors. It is present in all neurons (Doran et al., 1983 [PubMed 6343558]).
Molecular Weight:	24824
NCBI Accession:	NP_004172
UniProt:	P09936
Pathways:	Feeding Behaviour

Application Details

Application Notes:	IF: 1:10~50. WB: 1:1000. IHC-P: 1:50~100. IHC-P: 1:25. IHC-P: 1:25. FC: 1:10~50
Restrictions:	For Research Use only

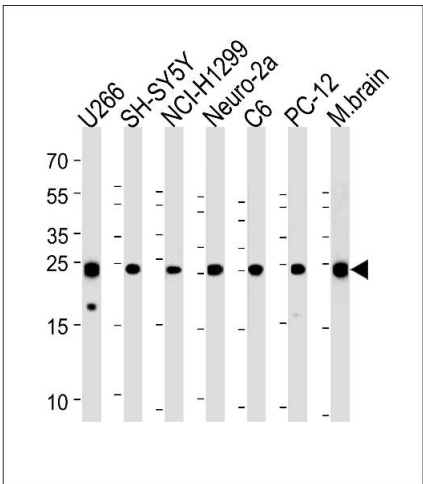
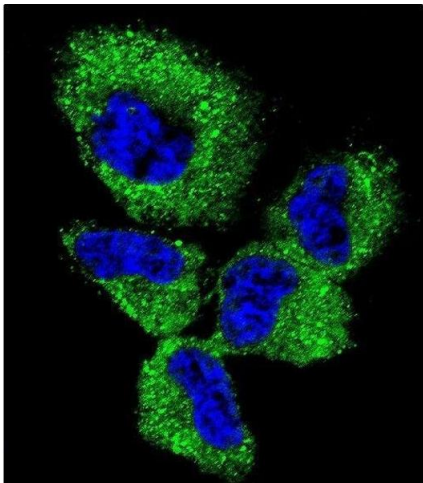
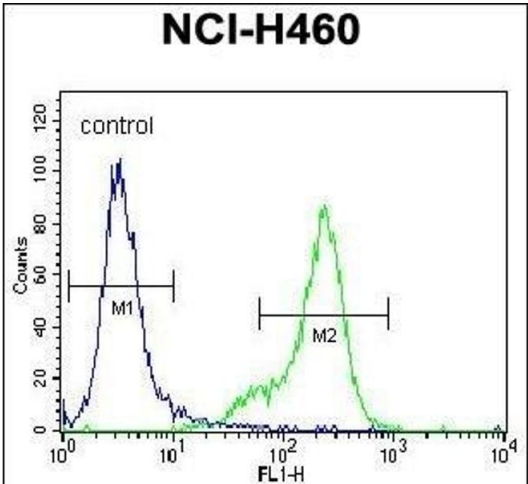
Handling

Format:	Liquid
Buffer:	Purified polyclonal antibody supplied in PBS with 0.09 % (W/V) sodium azide.
Preservative:	Sodium azide
Precaution of Use:	This product contains Sodium azide: a POISONOUS AND HAZARDOUS SUBSTANCE which should be handled by trained staff only.
Storage:	4 °C,-20 °C
Expiry Date:	6 months

Publications

Product cited in:	<p>Guzel, Yazici, Pek, Doganay, Simsek, Saglam, Turan, Yazici: "Atrial natriuretic peptide and posterior pituitary neurohormone changes in patients with acute schizophrenia." in: Neuropsychiatric disease and treatment, Vol. 14, pp. 1855-1860, (2018) (PubMed).</p> <p>Yuksel, Itai, Balaban, Kocak, Seven, Kucur, Erbakirci, Keskin: "Immediate breastfeeding and skin-to-skin contact during cesarean section decreases maternal oxidative stress, a prospective randomized case-controlled study." in: The journal of maternal-fetal & neonatal medicine, Vol.</p>
-------------------	---

Images



Flow Cytometry

Image 1. UCHL1 Antibody (C-term) (ABIN1882188 and ABIN2839165) flow cytometric analysis of NCI- cells (right histogram) compared to a negative control cell (left histogram).FITC-conjugated goat-anti-rabbit secondary antibodies were used for the analysis.

Immunofluorescence

Image 2. Confocal immunofluorescent analysis of UCHL1 Antibody (C-term) (ABIN1882188 and ABIN2839165) with NCI- cell followed by Alexa Fluor 488-conjugated goat anti-rabbit IgG (green).DI was used to stain the cell nuclear (blue).

Western Blotting

Image 3. UCHL1 Antibody (C-term) (ABIN1882188 and ABIN2839165) western blot analysis in ,SH-SY5Y,NCI-,mouse Neuro-2a,rat C6,PC-12 cell line and mouse brain tissue lysates (35 µg/lane).This demonstrates the UCHL1 antibody detected the UCHL1 protein (arrow).

Please check the [product details page](#) for more images. Overall 6 images are available for ABIN1882188.