

Datasheet for ABIN1882200  
**anti-ABO antibody (N-Term)**[Go to Product page](#)

1 Image

5 Publications

## Overview

Quantity:	0.1 mL
Target:	ABO
Binding Specificity:	AA 41-68, N-Term
Reactivity:	Human
Host:	Mouse
Clonality:	Monoclonal
Application:	Western Blotting (WB)

## Product Details

Immunogen:	This ABO antibody is generated from mice immunized with a KLH conjugated synthetic peptide between 41-68 amino acids from the N-terminal region of human ABO.
Clone:	593CT3-2-2
Isotype:	IgM
Purification:	Mouse monoclonal antibody supplied in crude ascites with 0.09% (W/V) sodium azide.

## Target Details

Target:	ABO
Alternative Name:	ABO ( <a href="#">ABO Products</a> )
Background:	This gene encodes proteins related to the first discovered blood group system, ABO. Which allele is present in an individual determines the blood group. The 'O' blood group is caused by a deletion of guanine-258 near the N-terminus of the protein which results in a frameshift and

## Target Details

translation of an almost entirely different protein. Individuals with the A, B, and AB alleles express glycosyltransferase activities that convert the H antigen into the A or B antigen. Other minor alleles have been found for this gene.

Molecular Weight: 40934

NCBI Accession: [NP\\_065202](#)

UniProt: [P16442](#)

## Application Details

Application Notes: WB: 1:200~6400

Restrictions: For Research Use only

## Handling

Format: Liquid

Buffer: Mouse monoclonal antibody supplied in crude ascites with 0.09 % (W/V) sodium azide.

Preservative: Sodium azide

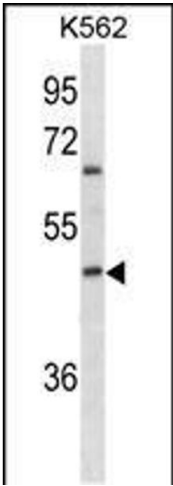
Precaution of Use: This product contains Sodium azide: a POISONOUS AND HAZARDOUS SUBSTANCE which should be handled by trained staff only.

Storage: 4 °C,-20 °C

Expiry Date: 6 months

## Publications

Product cited in: Mei, Li, Chu, Yiu, Lo: "The inhibitory effects of silver diamine fluoride at different concentrations on matrix metalloproteinases." in: **Dental materials : official publication of the Academy of Dental Materials**, Vol. 28, Issue 8, pp. 903-8, (2012) ([PubMed](#)).



Western Blotting

**Image 1.** ABO Antibody (N-term)(Ascites) ABIN1882200 western blot analysis in K562 cell line lysates (35  $\mu$ g/lane). This demonstrates the ABO antibody detected the ABO protein (arrow).