



[Go to Product page](#)

Datasheet for ABIN1882203

anti-Acetylcholinesterase antibody (C-Term)

1 Image

3 Publications

Overview

Quantity:	400 µL
Target:	Acetylcholinesterase (AChE)
Binding Specificity:	AA 587-611, C-Term
Reactivity:	Human, Mouse, Rat, Green Monkey
Host:	Mouse
Clonality:	Monoclonal
Conjugate:	This Acetylcholinesterase antibody is un-conjugated
Application:	Western Blotting (WB)

Product Details

Immunogen:	This AChE antibody is generated from mouse immunized with a KLH conjugated synthetic peptide between 587-611 amino acids from the C-terminal region of human AChE.
Clone:	684CT8-3-4
Isotype:	IgG1
Predicted Reactivity:	B, Rb
Purification:	This antibody is purified through a protein G column, followed by dialysis against PBS.

Target Details

Target:	Acetylcholinesterase (AChE)
Alternative Name:	AChE (AChE Products)

Target Details

Background:	Terminates signal transduction at the neuromuscular junction by rapid hydrolysis of the acetylcholine released into the synaptic cleft. Role in neuronal apoptosis.
Molecular Weight:	67796
NCBI Accession:	NP_000656 , NP_001269378 , NP_056646
UniProt:	P22303
Pathways:	Skeletal Muscle Fiber Development

Application Details

Application Notes:	WB: 1:2000
Restrictions:	For Research Use only

Handling

Format:	Liquid
Buffer:	Purified monoclonal antibody supplied in PBS with 0.09 % (W/V) sodium azide.
Preservative:	Sodium azide
Precaution of Use:	This product contains Sodium azide: a POISONOUS AND HAZARDOUS SUBSTANCE which should be handled by trained staff only.
Storage:	4 °C,-20 °C
Expiry Date:	6 months

Publications

Product cited in:	<p>Wendeler, Pabst, Wang, Strouse, Wang, Hunter: "Process-scale purification and analytical characterization of highly gamma-carboxylated recombinant human prothrombin." in: Journal of chromatography. A, Vol. 1325, pp. 171-8, (2014) (PubMed).</p> <p>Yang, Ko, Yang, Kim, Seo, Park, Choi, Seong, Kweon: "Interleukin-1 promotes coagulation, which is necessary for protective immunity in the lung against Streptococcus pneumoniae infection." in: The Journal of infectious diseases, Vol. 207, Issue 1, pp. 50-60, (2012) (PubMed).</p> <p>Lim, Joy, Hill, San Brian Chia: "Novel agmatine and agmatine-like peptidomimetic inhibitors of the West Nile virus NS2B/NS3 serine protease." in: European journal of medicinal chemistry,</p>
-------------------	--

Images

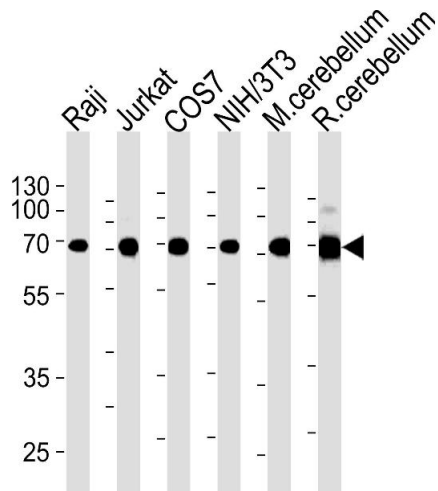
**Western Blotting**

Image 1. ACHE Antibody (C-term) (ABIN1882203 and ABIN2838474) western blot analysis in Raji, Jurkat, COS7, mouse NIH/3T3 cell line and mouse cerebellum, rat cerebellum tissue lysates (35 µg/lane). This demonstrates the ACHE antibody detected the ACHE protein (arrow).