

Datasheet for ABIN1882225

anti-CKB antibody[Go to Product page](#)**1** Image**4** Publications

Overview

Quantity:	400 µL
Target:	CKB
Reactivity:	Human, Mouse
Host:	Mouse
Clonality:	Monoclonal
Application:	Western Blotting (WB)

Product Details

Immunogen:	Purified His-tagged CKB protein was used to produced this monoclonal antibody.
Clone:	893CT29-1-1
Isotype:	IgG1
Purification:	This antibody is purified through a protein G column, followed by dialysis against PBS.

Target Details

Target:	CKB
Alternative Name:	Creatine Kinase BB (CKB Products)
Background:	Reversibly catalyzes the transfer of phosphate between ATP and various phosphogens (e.g. creatine phosphate). Creatine kinase isoenzymes play a central role in energy transduction in tissues with large, fluctuating energy demands, such as skeletal muscle, heart, brain and spermatozoa.
Molecular Weight:	42644

Target Details

NCBI Accession: [NP_001814](#)

UniProt: [P12277](#)

Application Details

Application Notes: WB: 1:1000

Restrictions: For Research Use only

Handling

Format: Liquid

Buffer: Purified monoclonal antibody supplied in PBS with 0.09 % (W/V) sodium azide.

Preservative: Sodium azide

Precaution of Use: This product contains Sodium azide: a POISONOUS AND HAZARDOUS SUBSTANCE which should be handled by trained staff only.

Storage: 4 °C, -20 °C

Expiry Date: 6 months

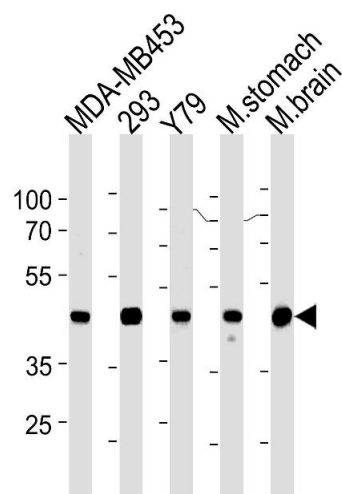
Publications

Product cited in: Mariman, Schepens, Wieringa: "Complete nucleotide sequence of the human creatine kinase B gene." in: **Nucleic acids research**, Vol. 17, Issue 15, pp. 6385, (1989) ([PubMed](#)).

Mariman, Broers, Claesen, Tesser, Wieringa: "Structure and expression of the human creatine kinase B gene." in: **Genomics**, Vol. 1, Issue 2, pp. 126-37, (1988) ([PubMed](#)).

Villarreal-Levy, Ma, Kerner, Roberts, Perryman: "Human creatine kinase: isolation and sequence analysis of cDNA clones for the B subunit, development of subunit specific probes and determination of gene copy number." in: **Biochemical and biophysical research communications**, Vol. 144, Issue 3, pp. 1116-27, (1987) ([PubMed](#)).

Kaye, McBride, Battey, Gazdar, Sausville: "Human creatine kinase-B complementary DNA. Nucleotide sequence, gene expression in lung cancer, and chromosomal assignment to two distinct loci." in: **The Journal of clinical investigation**, Vol. 79, Issue 5, pp. 1412-20, (1987) ([PubMed](#)).



Western Blotting

Image 1. Creatine Kinase BB (CKB) Antibody (Center) (ABIN1882225 and ABIN2843356) western blot analysis in MDA-M,293,Y79 cell line ,mouse stomach and brain tissue lysates (35 µg/lane).This demonstrates the CKB antibody detected the CKB protein (arrow).