

Datasheet for ABIN1882259  
**anti-LEF1 antibody (AA 10-37)**[Go to Product page](#)

1 Image

3 Publications

## Overview

Quantity:	0.1 mL
Target:	LEF1
Binding Specificity:	AA 10-37
Reactivity:	Human
Host:	Mouse
Clonality:	Monoclonal
Conjugate:	This LEF1 antibody is un-conjugated
Application:	Western Blotting (WB)

## Product Details

Immunogen:	This LEF1 antibody is generated from mice immunized with a KLH conjugated synthetic peptide between 10-37 amino acids from human LEF1.
Clone:	661CT8-3-5
Isotype:	IgG1
Predicted Reactivity:	M, Rat
Purification:	Mouse monoclonal antibody supplied in crude ascites with 0.09% (W/V) sodium azide.

## Target Details

Target:	LEF1
Alternative Name:	LEF1 ( <a href="#">LEF1 Products</a> )

## Target Details

Background:	This gene encodes a transcription factor belonging to a family of proteins that share homology with the high mobility group protein-1. The protein encoded by this gene can bind to a functionally important site in the T-cell receptor-alpha enhancer, thereby conferring maximal enhancer activity. This transcription factor is involved in the Wnt signaling pathway, and it may function in hair cell differentiation and follicle morphogenesis. Mutations in this gene have been found in somatic sebaceous tumors. This gene has also been linked to other cancers, including androgen-independent prostate cancer. Alternative splicing results in multiple transcript variants.
Molecular Weight:	44201
NCBI Accession:	<a href="#">NP_001124185</a> , <a href="#">NP_001124186</a> , <a href="#">NP_001159591</a> , <a href="#">NP_057353</a>
UniProt:	<a href="#">Q9UJU2</a>
Pathways:	<a href="#">WNT Signaling</a> , <a href="#">Intracellular Steroid Hormone Receptor Signaling Pathway</a> , <a href="#">Regulation of Hormone Metabolic Process</a> , <a href="#">Nuclear Hormone Receptor Binding</a> , <a href="#">Chromatin Binding</a>

## Application Details

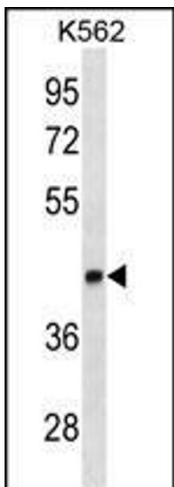
Application Notes:	WB: 1:500~8000
Restrictions:	For Research Use only

## Handling

Format:	Liquid
Buffer:	Mouse monoclonal antibody supplied in crude ascites with 0.09 % (W/V) sodium azide.
Preservative:	Sodium azide
Precaution of Use:	This product contains Sodium azide: a POISONOUS AND HAZARDOUS SUBSTANCE which should be handled by trained staff only.
Storage:	4 °C, -20 °C
Expiry Date:	6 months

## Publications

Product cited in:	Mishra, Chandravanshi, Trigun, Krishnamurthy: "Ambroxol modulates 6-Hydroxydopamine-induced temporal reduction in Glucocerebrosidase (GCase) enzymatic activity and Parkinson's disease symptoms." in: <b>Biochemical pharmacology</b> , Vol. 155, pp. 479-493, (2019) ( <a href="#">PubMed</a> ).
-------------------	--



Western Blotting

**Image 1.** LEF1 Antibody ABIN1882259 western blot analysis in K562 cell line lysates (35 µg/lane). This demonstrates the LEF1 antibody detected the LEF1 protein (arrow).