



[Go to Product page](#)

Datasheet for ABIN1882263

anti-LYPD6B antibody (AA 79-108)

1 Image

1 Publication

Overview

Quantity:	0.1 mL
Target:	LYPD6B
Binding Specificity:	AA 79-108
Reactivity:	Human, Mouse
Host:	Mouse
Clonality:	Monoclonal
Application:	Western Blotting (WB)

Product Details

Immunogen:	This LYPD6B antibody is generated from mice immunized with a KLH conjugated synthetic peptide between 79-108 amino acids from the Central region of human LYPD6B.
Clone:	634CT7-10-1
Isotype:	IgG2b
Purification:	Mouse monoclonal antibody supplied in crude ascites with 0.09% (W/V) sodium azide.

Target Details

Target:	LYPD6B
Alternative Name:	LYPD6B (LYPD6B Products)
Background:	The function of this protein is unknown.
Molecular Weight:	20656

Target Details

NCBI Accession: [NP_808879](#)

UniProt: [Q8NI32](#)

Application Details

Application Notes: WB: 1:500~4000

Restrictions: For Research Use only

Handling

Format: Liquid

Buffer: Mouse monoclonal antibody supplied in crude ascites with 0.09 % (W/V) sodium azide.

Preservative: Sodium azide

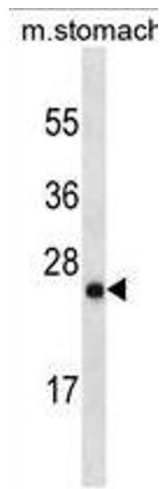
Precaution of Use: This product contains Sodium azide: a POISONOUS AND HAZARDOUS SUBSTANCE which should be handled by trained staff only.

Storage: 4 °C, -20 °C

Expiry Date: 6 months

Publications

Product cited in: Mei, Li, Chu, Yiu, Lo: "The inhibitory effects of silver diamine fluoride at different concentrations on matrix metalloproteinases." in: **Dental materials : official publication of the Academy of Dental Materials**, Vol. 28, Issue 8, pp. 903-8, (2012) ([PubMed](#)).



Western Blotting

Image 1. LYPD6B Antibody (Center)(Ascites) ABIN1882263 western blot analysis in mouse stomach tissue lysates (35 µg/lane). This demonstrates the LYPD6B antibody detected the LYPD6B protein (arrow).