

Datasheet for ABIN1882275

anti-PIN1 antibody**2** Images[Go to Product page](#)

Overview

Quantity:	400 µL
Target:	PIN1
Reactivity:	Human, Mouse, Rat, Green Monkey
Host:	Mouse
Clonality:	Monoclonal
Application:	Western Blotting (WB), Immunohistochemistry (Paraffin-embedded Sections) (IHC (p))

Product Details

Immunogen:	Purified His-tagged PIN1 protein was used to produced this monoclonal antibody.
Clone:	855CT1-7-5
Isotype:	IgG1
Purification:	This antibody is purified through a protein G column, eluted with high and low pH buffers and neutralized immediately, followed by dialysis against PBS.

Target Details

Target:	PIN1
Alternative Name:	PIN1 (PIN1 Products)
Background:	Essential PPlase that regulates mitosis presumably by interacting with NIMA and attenuating its mitosis-promoting activity. Displays a preference for an acidic residue N-terminal to the isomerized proline bond. Catalyzes pSer/Thr-Pro cis/trans isomerizations. Down-regulates kinase activity of BTK. Can transactivate multiple oncogenes and induce centrosome

Target Details

amplification, chromosome instability and cell transformation. Required for the efficient dephosphorylation and recycling of RAF1 after mitogen activation.

Molecular Weight: 18243

NCBI Accession: [NP_006212](#)

UniProt: [Q13526](#)

Application Details

Application Notes: WB: 1:1000. IHC-P: 1:25

Restrictions: For Research Use only

Handling

Format: Liquid

Buffer: Purified monoclonal antibody supplied in PBS with 0.09 % (W/V) sodium azide.

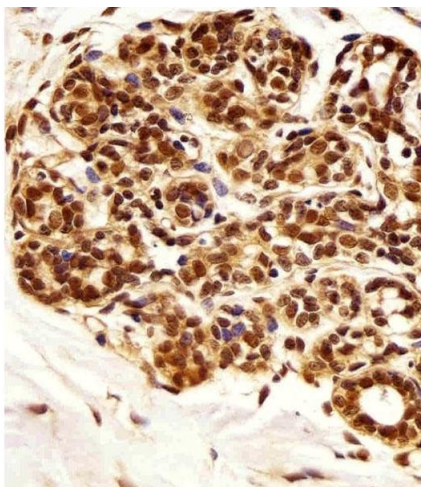
Preservative: Sodium azide

Precaution of Use: This product contains Sodium azide: a POISONOUS AND HAZARDOUS SUBSTANCE which should be handled by trained staff only.

Storage: 4 °C, -20 °C

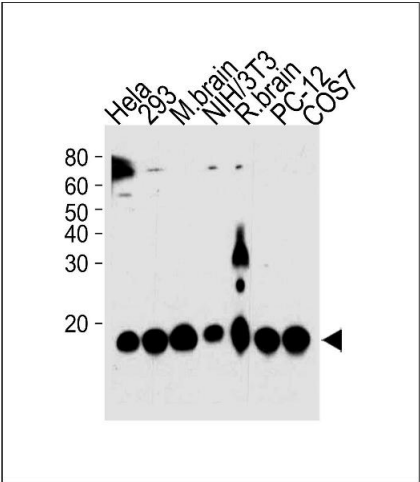
Expiry Date: 6 months

Images



Immunohistochemistry (Paraffin-embedded Sections)

Image 1. Immunohistochemical analysis of paraffin-embedded H. breast section using PIN1 Antibody B. B was diluted at 1:25 dilution. A undiluted biotinylated goat polyvalent antibody was used as the secondary, followed by DAB staining.



Western Blotting

Image 2. PIN1 Antibody (ABIN1882275 and ABIN2843608) western blot analysis in Hela,293,mouse NIH/3T3,PC-12,COS-7 cell line and mouse brain,rat brain tissue lysates (35 µg/lane).This demonstrates the PIN1 antibody detected the PIN1 protein (arrow).