

Datasheet for ABIN1882373

## anti-IRF6 antibody

3 Images



[Go to Product page](#)

### Overview

Quantity:	100 µL
Target:	IRF6
Reactivity:	Human, Mouse, Rabbit
Host:	Rabbit
Clonality:	Polyclonal
Conjugate:	This IRF6 antibody is un-conjugated
Application:	Western Blotting (WB), Immunohistochemistry (IHC)

### Product Details

Isotype:	IgG
Purification:	Affinity purification

### Target Details

Target:	IRF6
Alternative Name:	IRF6 ( <a href="#">IRF6 Products</a> )
Molecular Weight:	467 kDa
Gene ID:	3664
UniProt:	<a href="#">O14896</a>

## Application Details

Application Notes: WB 1:500-1:2000, IHC 1:50-1:200

Restrictions: For Research Use only

## Handling

Format: Liquid

Concentration: 1 mg/mL

Buffer: PBS with 0.02 % sodium azide, 50 % glycerol, pH 7.4

Preservative: Sodium azide

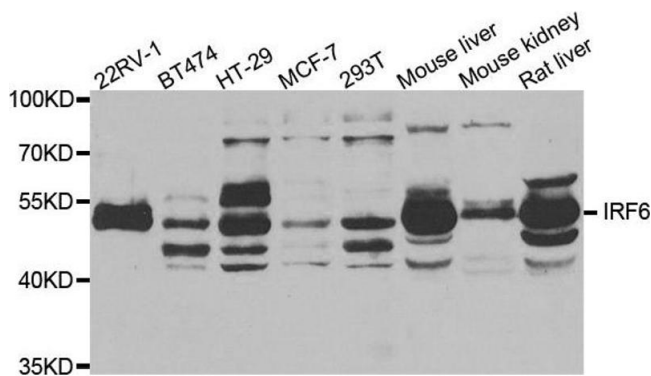
Precaution of Use: This product contains Sodium azide: a POISONOUS AND HAZARDOUS SUBSTANCE which should be handled by trained staff only.

Handling Advice: Avoid repeated freeze/thaw cycles.

Storage: -20 °C

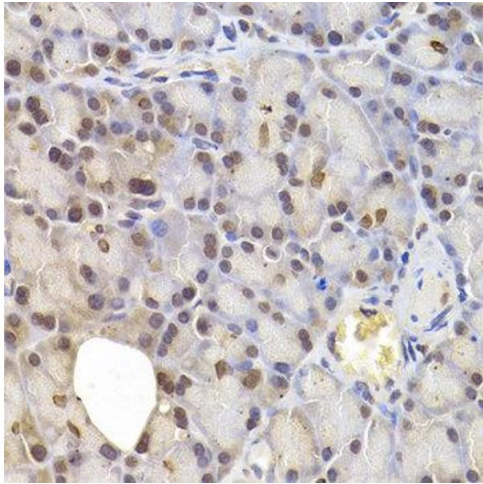
Storage Comment: Store at -20°C.

## Images



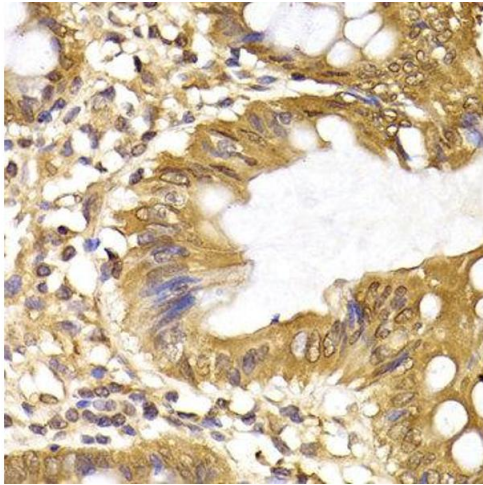
### Western Blotting

Image 1.



### Immunohistochemistry

**Image 2.** Immunohistochemistry of paraffin-embedded rat pancreas using IRF6 antibody at dilution of 1:200 (400x lens).



### Immunohistochemistry

**Image 3.** Immunohistochemistry of paraffin-embedded human colon cancer using IRF6 antibody at dilution of 1:200 (400x lens).