

Datasheet for ABIN1889426

CRISP3 ELISA Kit**1** Image[Go to Product page](#)

Overview

Quantity:	96 tests
Target:	CRISP3
Binding Specificity:	AA 21-245
Reactivity:	Human
Method Type:	Sandwich ELISA
Detection Range:	1.56-100 ng/mL
Minimum Detection Limit:	1.56 ng/mL
Application:	ELISA

Product Details

Purpose:	Sandwich High Sensitivity ELISA kit for Quantitative Detection of Human CRISP3
Brand:	PicoKine™
Sample Type:	Cell Culture Supernatant, Serum, Plasma (heparin), Plasma (EDTA), Saliva, Urine, Tissue Homogenate
Analytical Method:	Quantitative
Detection Method:	Colorimetric
Immunogen:	Expression system for standard: NSO Immunogen sequence: N21-Y245
Specificity:	Expression system for standard: NSO Immunogen sequence: N21-Y245

Product Details

Cross-Reactivity (Details):	There is no detectable cross-reactivity with other relevant proteins.
Sensitivity:	<50pg/mL
Material not included:	Microplate reader in standard size. Automated plate washer. Adjustable pipettes and pipette tips. Multichannel pipettes are recommended in the condition of large amount of samples in the detection. Clean tubes and Eppendorf tubes. Washing buffer (neutral PBS or TBS). Preparation of 0.01M TBS: Add 1.2g Tris, 8.5g NaCl

Target Details

Target:	CRISP3
Alternative Name:	CRISP3 (CRISP3 Products)
Background:	<p>Background: Cysteine-rich secretory protein 3 is a cysteine-rich secretory protein that in humans is encoded by the CRISP3 gene. CRISP3 expression is found in the secretory epithelium throughout the male genital tract, with particularly high expression in the cauda epididymis and ampulla vas deferens. It is a potential biomarker for prostate cancer. CRISP3 gene can be defined as an early-transcribed gene with a putative role in the pathophysiology of sjogren's syndrome. CRISP3 is present in exocrine secretions and in secretory granules of neutrophilic granulocytes and is believed to play a role in innate immunity.</p> <p>Synonyms: Cysteine-rich secretory protein 3,CRISP-3,Specific granule protein of 28 kDa,SGP28,CRISP3,</p> <p>Full Gene Name: Cysteine-rich secretory protein 3</p> <p>Cellular Localisation: Secreted. In neutrophils, localized in specific granules.</p>
Gene ID:	10321
UniProt:	P54108

Application Details

Application Notes:	Before using Kit, spin tubes and bring down all components to bottom of tube. Duplicate well assay was recommended for both standard and sample testing.
Comment:	<p>Sequence similarities: Belongs to the CRISP family.</p> <p>Tissue Specificity: Salivary gland, pancreas and prostate > epididymis, ovary, thymus and colon.</p>
Plate:	Pre-coated
Protocol:	human CRISP3 ELISA Kit was based on standard sandwich enzyme-linked immune-sorbent assay technology. A monoclonal antibody from mouse specific for CRISP3 has been precoated

Application Details

onto 96-well plates. Standards(NSO, N21-Y245) and test samples are added to the wells, a biotinylated detection polyclonal antibody from goat specific for CRISP3 is added subsequently and then followed by washing with PBS or TBS buffer. Avidin-Biotin-Peroxidase Complex was added and unbound conjugates were washed away with PBS or TBS buffer. HRP substrate TMB was used to visualize HRP enzymatic reaction. TMB was catalyzed by HRP to produce a blue color product that changed into yellow after adding acidic stop solution. The density of yellow is proportional to the human CRISP3 amount of sample captured in plate.

Assay Procedure: Aliquot 0.1 mL per well of the 100 ng/mL, 50 ng/mL, 25 ng/mL, 1.25 ng/mL, 6.25 ng/mL, 3.12 ng/mL, 1.56 ng/mL human CRISP3 standard solutions into the precoated 96-well plate. Add 0.1 mL of the sample diluent buffer into the control well (Zero well). Add 0.1 mL of each properly diluted sample of human cell culture supernates, serum, plasma (heparin, EDTA), saliva, urine or tissue homogenates to each empty well. See "Sample Dilution Guideline" above for details. We recommend that each human CRISP3 standard solution and each sample is measured in duplicate.

Assay Precision:

- Sample 1: n=16, Mean(ng/ml): 18, Standard deviation: 0.63, CV(%): 3.5
- Sample 2: n=16, Mean(ng/ml): 41, Standard deviation: 1.7, CV(%): 4.1
- Sample 3: n=16, Mean(ng/ml): 72, Standard deviation: 2.74, CV(%): 3.8,
- Sample 1: n=24, Mean(ng/ml): 20, Standard deviation: 1.14, CV(%): 5.7
- Sample 2: n=24, Mean(ng/ml): 38, Standard deviation: 2.4, CV(%): 6.3
- Sample 3: n=24, Mean(ng/ml): 65, Standard deviation: 3.8, CV(%): 5.8

Restrictions: For Research Use only

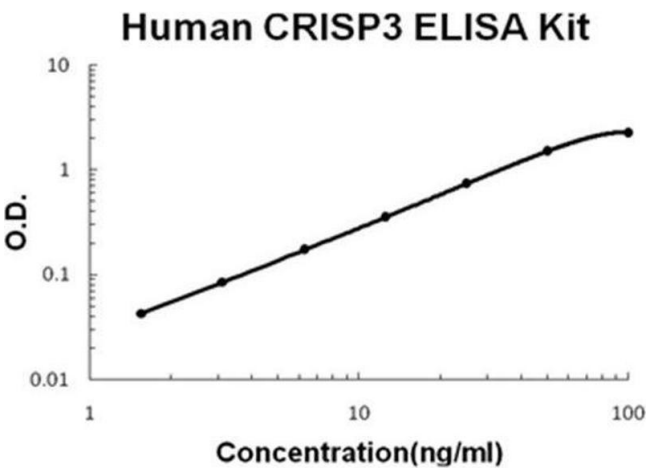
Handling

Handling Advice: Avoid multiple freeze-thaw cycles.

Storage: -20 °C, 4 °C

Storage Comment: Store at 4°C for 6 months, at -20°C for 12 months. Avoid multiple freeze-thaw cycles

Expiry Date: 12 months



ELISA

Image 1. Human CRISP3 PicoKine ELISA Kit standard curve