



[Go to Product page](#)

Datasheet for ABIN1890419

anti-eIF4EBP2 antibody (AA 87-115)

1 Image

Overview

Quantity:	200 µL
Target:	eIF4EBP2 (EIF4EBP2)
Binding Specificity:	AA 87-115
Reactivity:	Human
Host:	Rabbit
Clonality:	Polyclonal
Conjugate:	This eIF4EBP2 antibody is un-conjugated
Application:	Western Blotting (WB), Immunohistochemistry (IHC), Immunohistochemistry (Paraffin-embedded Sections) (IHC (p))

Product Details

Brand:	IHC-plus™
Specificity:	This EIF4EBP2 antibody is generated from rabbits immunized with a KLH conjugated synthetic peptide between 87-115 amino acids from the C-terminal region of human EIF4EBP2.
Purification:	Protein A purified

Target Details

Target:	eIF4EBP2 (EIF4EBP2)
Alternative Name:	4E-BP2 / EIF4EBP2 (EIF4EBP2 Products)
Background:	Name/Gene ID: EIF4EBP2

Target Details

Synonyms: EIF4EBP2, 4E-BP2, 4EBP2, EIF4E-binding protein 2, PHASII

Gene ID: 1979

Application Details

Application Notes: Approved: IHC, IHC-P (1:100), WB (1:1000)

Comment: Target Species of Antibody: Human

Restrictions: For Research Use only

Handling

Format: Liquid

Concentration: Lot specific

Buffer: PBS, 0.09 % sodium azide

Preservative: Sodium azide

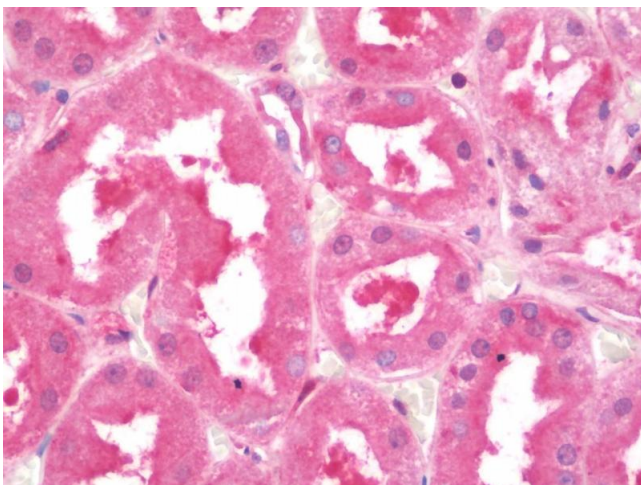
Precaution of Use: This product contains Sodium azide: a POISONOUS AND HAZARDOUS SUBSTANCE which should be handled by trained staff only.

Storage: 4 °C, -20 °C

Storage Comment: Maintain refrigerated at 2-8°C for up to 6 months. For long term storage store at -20°C.

Expiry Date: 6 months

Images



Immunohistochemistry

Image 1. Anti-4E-BP2 / EIF4EBP2 antibody IHC staining of human kidney. Immunohistochemistry of formalin-fixed, paraffin-embedded tissue after heat-induced antigen retrieval. Antibody dilution 1:100.