

Datasheet for ABIN1891060  
**anti-ACPP antibody (AA 313-341)**



[Go to Product page](#)

1 Image

## Overview

Quantity:	100 µL
Target:	ACPP
Binding Specificity:	AA 313-341
Reactivity:	Human, Mouse
Host:	Rabbit
Clonality:	Polyclonal
Conjugate:	This ACPP antibody is un-conjugated
Application:	Western Blotting (WB), Immunohistochemistry (IHC), Immunohistochemistry (Paraffin-embedded Sections) (IHC (p))

## Product Details

Brand:	IHC-plus™
Specificity:	This ACPP antibody is generated from rabbits immunized with a KLH conjugated synthetic peptide between 313-341 amino acids from the C-terminal region of human ACPP.
Purification:	Ammonium sulfate precipitation

## Target Details

Target:	ACPP
Alternative Name:	ACPP ( <a href="#">ACPP Products</a> )
Background:	Name/Gene ID: ACPP

## Target Details

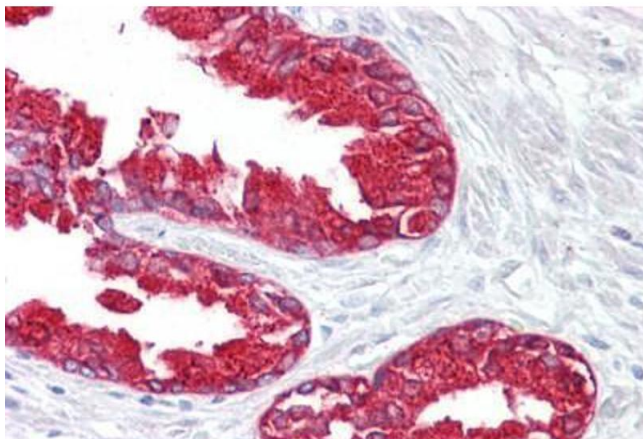
	Synonyms: ACP3, ACP3, 5-NT, 5-nucleotidase, Acid phosphatase, prostate, ACP-3, Ecto-5-nucleotidase, PAP, Prostatic acid phosphatase, Thiamine monophosphatase, Prostatic acid phosphatase, TMPase
Gene ID:	55
UniProt:	<a href="#">P15309</a>
Pathways:	<a href="#">Synaptic Membrane</a> , <a href="#">Ribonucleoside Biosynthetic Process</a>

## Application Details

Application Notes:	Approved: IHC, IHC-P (10 µg/mL), WB (1:1000)  Usage: Please note that cross-reactivity with mouse has been confirmed in WB only. The antibody has not been evaluated for use with mouse in alternate assays, including IHC. In the absence of testing data we cannot guarantee suitability for use with mouse in assays other than Western.
Comment:	Target Species of Antibody: Human
Restrictions:	For Research Use only

## Handling

Format:	Liquid
Concentration:	Lot specific
Buffer:	PBS, 0.09 % sodium azide
Preservative:	Sodium azide
Precaution of Use:	This product contains Sodium azide: a POISONOUS AND HAZARDOUS SUBSTANCE which should be handled by trained staff only.
Handling Advice:	Avoid freeze-thaw cycles.
Storage:	4 °C,-20 °C
Storage Comment:	Short term: 4°C. Long term: Store at -20°C. Avoid freeze-thaw cycles.



#### Immunohistochemistry

**Image 1.** Anti-Prostatic Acid Phosphatase antibody IHC staining of human prostate. Immunohistochemistry of formalin-fixed, paraffin-embedded tissue after heat-induced antigen retrieval. Antibody ABIN960473 concentration 10 ug/ml.