

Datasheet for ABIN1891174

anti-Actin, gamma 1 antibody (N-Term)**2** Images[Go to Product page](#)

Overview

Quantity:	50 µg
Target:	Actin, gamma 1 (ACTG1)
Binding Specificity:	N-Term
Reactivity:	Human, Mouse
Host:	Mouse
Clonality:	Monoclonal
Conjugate:	This Actin, gamma 1 antibody is un-conjugated
Application:	Western Blotting (WB), Immunohistochemistry (IHC), Immunohistochemistry (Paraffin-embedded Sections) (IHC (p)), Immunofluorescence (IF)

Product Details

Brand:	IHC-plus™
Immunogen:	Synthetic peptide corresponding to the N-terminal nonapeptide of gamma-cytoplasmic actin, coupled to KLH. Type of Immunogen: Synthetic peptide
Clone:	2A3
Isotype:	IgG2b
Specificity:	Clone 2A3 recognizes cytoplasmic actin gamma (known also as ACTG and Gamma Actin), a 41.8 kD cytoskeletal protein. Actins are highly conserved proteins that are involved in cell motility, structure and integrity and are ubiquitously expressed in all eukaryotic cells. Six

Product Details

different isoforms of actin have been identified. Clone 2A3 is highly specific for actin gamma and does not react with other actin isoforms.

Purification: Purified

Target Details

Target: Actin, gamma 1 (ACTG1)

Alternative Name: ACTG1 / Gamma Actin ([ACTG1 Products](#))

Background: Name/Gene ID: ACTG1

Synonyms: ACTG1, ACTG, Actin, gamma 1, BRWS2, Cytoskeletal gamma-actin, DFNA20, Actin, cytoplasmic 2, Gamma-actin, DFNA26

Gene ID: 71

Pathways: [Myometrial Relaxation and Contraction](#), [Cell-Cell Junction Organization](#)

Application Details

Application Notes: Approved: IF, IHC, IHC-P (10 µg/mL), WB (1:100 - 1:1000)

Comment: Target Species of Antibody: Human

Restrictions: For Research Use only

Handling

Format: Liquid

Concentration: Lot specific

Buffer: PBS, 0.09 % sodium azide

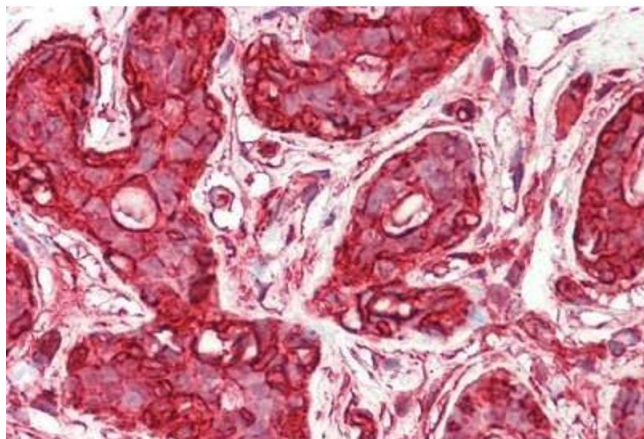
Preservative: Sodium azide

Precaution of Use: This product contains Sodium azide: a POISONOUS AND HAZARDOUS SUBSTANCE which should be handled by trained staff only.

Handling Advice: Avoid repeated freezing and thawing.

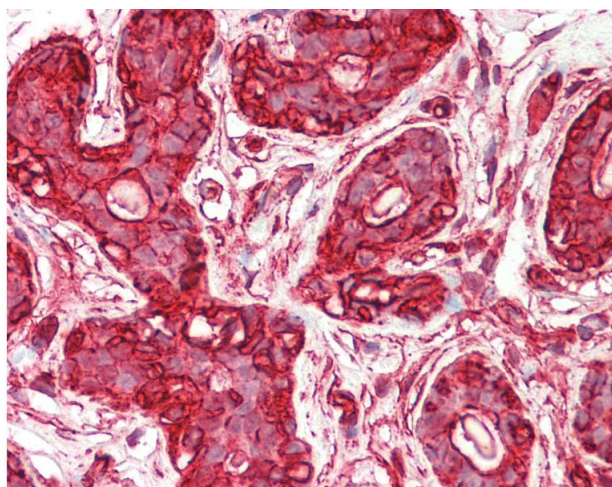
Storage: 4 °C, -20 °C

Storage Comment: 4°C or -20°C, Avoid freeze-thaw cycles.



Immunohistochemistry

Image 1. Human Breast: Formalin-Fixed, Paraffin-Embedded (FFPE)



Immunohistochemistry

Image 2. Anti-ACTG1 / Gamma Actin antibody IHC staining of human breast. Immunohistochemistry of formalin-fixed, paraffin-embedded tissue after heat-induced antigen retrieval. Antibody concentration 10 ug/ml.