

Datasheet for ABIN1893197

**anti-Annexin A2 antibody (AA 19-49)**[Go to Product page](#)**1** Image

## Overview

Quantity:	200 µL
Target:	Annexin A2 (ANXA2)
Binding Specificity:	AA 19-49
Reactivity:	Human, Mouse
Host:	Rabbit
Clonality:	Polyclonal
Conjugate:	This Annexin A2 antibody is un-conjugated
Application:	Western Blotting (WB), Immunohistochemistry (IHC), Immunohistochemistry (Paraffin-embedded Sections) (IHC (p))

## Product Details

Brand:	IHC-plus™
Specificity:	This ANXA2 antibody is generated from rabbits immunized with a KLH conjugated synthetic peptide between 19-49 amino acids from the N-terminal region of human ANXA2.
Purification:	Protein A purified

## Target Details

Target:	Annexin A2 (ANXA2)
Alternative Name:	ANXA2 / Annexin A2 ( <a href="#">ANXA2 Products</a> )
Background:	Name/Gene ID: ANXA2 Family: Annexin

## Target Details

Synonyms: ANXA2, Annexin A2, Annexin-2, ANX2, Calpactin I heavy chain, Chromobindin-8, CAL1H, Calpactin I heavy polypeptide, Chromobindin 8, LPC2, LIP2, Lipocortin II, p36, LPC2D, PAP-IV, Protein I, Annexin II, ANX2L4, Calpactin-1 heavy chain

Gene ID: 302

UniProt: [P07355](#)

Pathways: [S100 Proteins](#)

## Application Details

Application Notes: Approved: IHC, IHC-P (10 µg/mL), WB (1:1000)

Usage: Please note that cross-reactivity of this antibody with mouse has been confirmed in WB only. The antibody has not been evaluated for use with mouse in alternate assays, including IHC, at this time. In the absence of testing data we unfortunately cannot guarantee cross-reactivity with mouse in assays other than Western.

Comment: Target Species of Antibody: Human

Restrictions: For Research Use only

## Handling

Format: Liquid

Concentration: Lot specific

Buffer: PBS, 0.09 % sodium azide

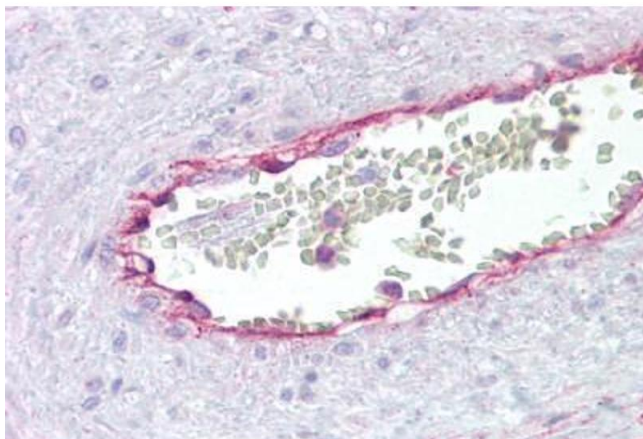
Preservative: Sodium azide

Precaution of Use: This product contains Sodium azide: a POISONOUS AND HAZARDOUS SUBSTANCE which should be handled by trained staff only.

Handling Advice: Avoid freeze-thaw cycles.

Storage: 4 °C, -20 °C

Storage Comment: Short term: 4°C. Long term: Store at -20°C. Avoid freeze-thaw cycles.



#### Immunohistochemistry

**Image 1.** Anti-Annexin A2 antibody IHC staining of human placental vessel. Immunohistochemistry of formalin-fixed, paraffin-embedded tissue after heat-induced antigen retrieval. Antibody ABIN960481 concentration 10 ug/ml.