

Datasheet for ABIN1899509
anti-Glypican 6 antibody (AA 16-46)

1 Image

[Go to Product page](#)

Overview

Quantity:	200 µL
Target:	Glypican 6 (GPC6)
Binding Specificity:	AA 16-46
Reactivity:	Human
Host:	Rabbit
Clonality:	Polyclonal
Conjugate:	This Glypican 6 antibody is un-conjugated
Application:	Immunohistochemistry (IHC), Western Blotting (WB), Immunohistochemistry (Paraffin-embedded Sections) (IHC (p))

Product Details

Brand:	IHC-plus™
Specificity:	This Glypican 6 (GPC6) antibody is generated from rabbits immunized with a KLH conjugated synthetic peptide between 16-46 amino acids from the N-terminal region of human Glypican 6 (GPC6).
Purification:	Ammonium sulfate precipitation

Target Details

Target:	Glypican 6 (GPC6)
Alternative Name:	GPC6 / Glypican 6 (GPC6 Products)
Background:	Name/Gene ID: GPC6

Target Details

Synonyms: GPC6, Glypican proteoglycan 6, OMIMD1, Glypican 6, Glypican-6

Gene ID: 10082

Pathways: [Glycosaminoglycan Metabolic Process](#)

Application Details

Application Notes: Approved: IHC, IHC-P (1:75), WB (1:1000)

Comment: Target Species of Antibody: Human

Restrictions: For Research Use only

Handling

Format: Liquid

Concentration: Lot specific

Buffer: PBS, 0.09 % sodium azide

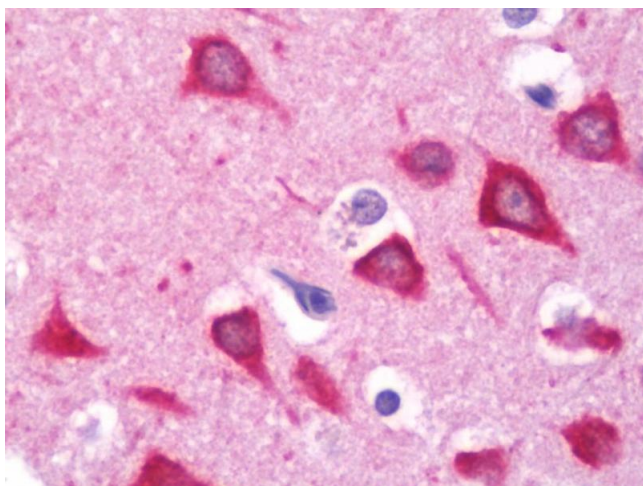
Preservative: Sodium azide

Precaution of Use: This product contains Sodium azide: a POISONOUS AND HAZARDOUS SUBSTANCE which should be handled by trained staff only.

Storage: 4 °C, -20 °C

Storage Comment: Maintain refrigerated at 2-8°C for up to 6 months. For long term storage store at -20°C.

Expiry Date: 6 months



Immunohistochemistry

Image 1. Anti-GPC6 / Glypican 6 antibody IHC staining of human brain, cortex. Immunohistochemistry of formalin-fixed, paraffin-embedded tissue after heat-induced antigen retrieval. Antibody dilution 1:75.