



[Go to Product page](#)

Datasheet for ABIN1900005  
**anti-TLE4 antibody (N-Term)**

2 Images

Overview

Quantity:	50 µL
Target:	TLE4
Binding Specificity:	N-Term
Reactivity:	Human, Rat, Mouse
Host:	Rabbit
Clonality:	Polyclonal
Conjugate:	This TLE4 antibody is un-conjugated
Application:	Western Blotting (WB), ELISA, Immunohistochemistry (IHC), Immunohistochemistry (Paraffin-embedded Sections) (IHC (p))

Product Details

Brand:	IHC-plus™
Immunogen:	A peptide from N terminal residues of human TLE4 protein  Type of Immunogen: Synthetic peptide
Isotype:	IgG
Specificity:	The peptide sequence of this antibody is corresponding to amino acids of human 1-50aa. This antibody is predicted to recognize mouse and rat TLE4 protein because of synthesized peptide amino acid 100 % homology with mouse and rattus TLE4 protein.
Purification:	Affinity purified

## Target Details

---

Target:	TLE4
Alternative Name:	GRG4 / TLE4 ( <a href="#">TLE4 Products</a> )
Background:	Name/Gene ID: TLE4  Synonyms: TLE4, BCE1, BCE-1, E(spl), Enhancer of split groucho 4, ESG, ESG4, GRG4, Protein BCE-1, KIAA1261, R-esp2, B lymphocyte gene 1
Gene ID:	7091
Pathways:	<a href="#">WNT Signaling</a>

## Application Details

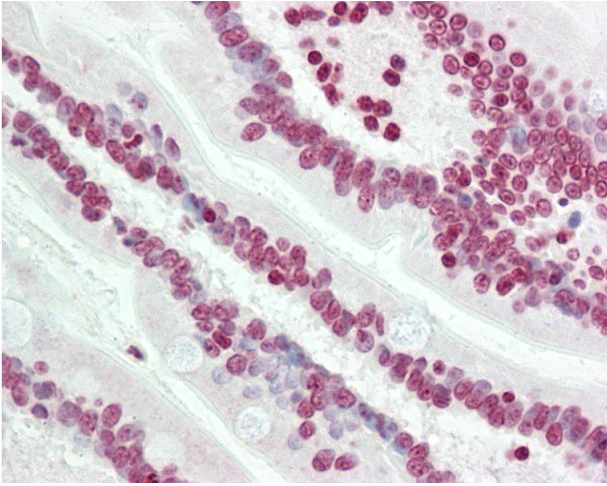
---

Application Notes:	Approved: ELISA (1:1000 - 1:10000), IHC, IHC-P (10 µg/mL), WB (1:500 - 1:1000)
Comment:	Target Species of Antibody: Human
Restrictions:	For Research Use only

## Handling

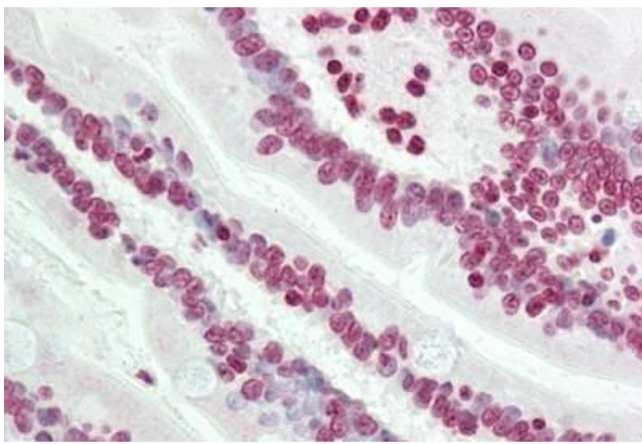
---

Format:	Liquid
Concentration:	Lot specific
Buffer:	PBS, pH 7.4, 0.02 % sodium azide
Preservative:	Sodium azide
Precaution of Use:	This product contains Sodium azide: a POISONOUS AND HAZARDOUS SUBSTANCE which should be handled by trained staff only.
Storage:	-20 °C
Storage Comment:	Store at -20°C for up to 1 year.
Expiry Date:	12 months



#### Immunohistochemistry

**Image 1.** Human Small Intestine: Formalin-Fixed, Paraffin-Embedded (FFPE)



#### Immunohistochemistry

**Image 2.** Human Small Intestine: Formalin-Fixed, Paraffin-Embedded (FFPE)