

Datasheet for ABIN1903435  
**anti-HSD11B1 antibody (AA 232-292)**



[Go to Product page](#)

1 Image

## Overview

Quantity:	50 µL
Target:	HSD11B1
Binding Specificity:	AA 232-292
Reactivity:	Human, Sheep
Host:	Rabbit
Clonality:	Polyclonal
Conjugate:	This HSD11B1 antibody is un-conjugated
Application:	Western Blotting (WB), Immunohistochemistry (IHC), Immunohistochemistry (Paraffin-embedded Sections) (IHC (p)), Immunocytochemistry (ICC), Immunohistochemistry (Frozen Sections) (IHC (fro))

## Product Details

Brand:	IHC-plus™
Immunogen:	Synthetic peptide corresponding to a region within amino acids 232 and 292 of HSD11B1. Type of Immunogen: Synthetic peptide
Isotype:	IgG
Specificity:	Human HSD11B1
Purification:	Immunoaffinity purified

## Target Details

---

Target:	HSD11B1
Alternative Name:	HSD11B1 / HSD11B ( <a href="#">HSD11B1 Products</a> )
Background:	Name/Gene ID: HSD11B1  Synonyms: HSD11B1, 11-beta-HSD1, 11-DH, CORTRD2, HSD11B, HSD11L, SDR26C1, HDL, HSD11
Gene ID:	3290
Pathways:	<a href="#">Metabolism of Steroid Hormones and Vitamin D</a> , <a href="#">Steroid Hormone Biosynthesis</a> , <a href="#">Regulation of Carbohydrate Metabolic Process</a>

## Application Details

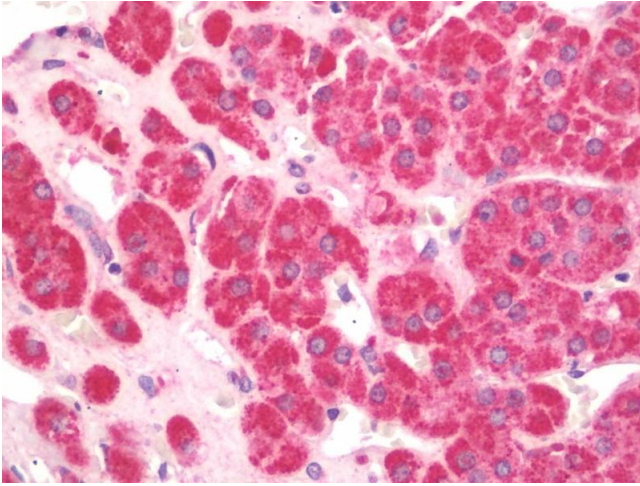
---

Application Notes:	Approved: ICC (1:100 - 1:1000), IHC, IHC-Fr, IHC-P (5 µg/mL), WB (1:500 - 1:3000)
Comment:	Target Species of Antibody: Human
Restrictions:	For Research Use only

## Handling

---

Format:	Liquid
Concentration:	Lot specific
Buffer:	PBS, pH 7.0, 40 % glycerol, 0.01 % Thimerosal
Preservative:	Thimerosal (Merthiolate)
Precaution of Use:	This product contains Thimerosal (Merthiolate): a POISONOUS AND HAZARDOUS SUBSTANCE which should be handled by trained staff only.
Handling Advice:	Avoid multiple freeze-thaw cycles.
Storage:	-20 °C
Storage Comment:	Keep as concentrated solution. Aliquot and store at -20°C or below. Avoid multiple freeze-thaw cycles.



### Immunohistochemistry

**Image 1.** Anti-HSD11B1 / HSD11B antibody IHC staining of human adrenal. Immunohistochemistry of formalin-fixed, paraffin-embedded tissue after heat-induced antigen retrieval.