



[Go to Product page](#)

Datasheet for ABIN1905992

anti-Integrin Alpha2b antibody (AA 122-171)

2 Images

Overview

Quantity:	50 µg
Target:	Integrin Alpha2b (CD41)
Binding Specificity:	AA 122-171
Reactivity:	Human, Mouse, Rat, Dog, Guinea Pig
Host:	Rabbit
Clonality:	Polyclonal
Conjugate:	This Integrin Alpha2b antibody is un-conjugated
Application:	Western Blotting (WB), Immunohistochemistry (IHC), Immunohistochemistry (Paraffin-embedded Sections) (IHC (p))

Product Details

Brand:	IHC-plus™
Immunogen:	Synthetic peptide located between aa122-171 of human ITGA2B (P08514, NP_000410). Percent identity by BLAST analysis: Human, Chimpanzee, Gorilla, Monkey, Elephant, Dog (100%), Galago, Marmoset, Horse, Pig (92%), Guinea pig (85%), Mouse, Rat, Rabbit (84%). Type of Immunogen: Synthetic peptide
Specificity:	Human ITGA2B / CD41
Purification:	Immunoaffinity purified

Target Details

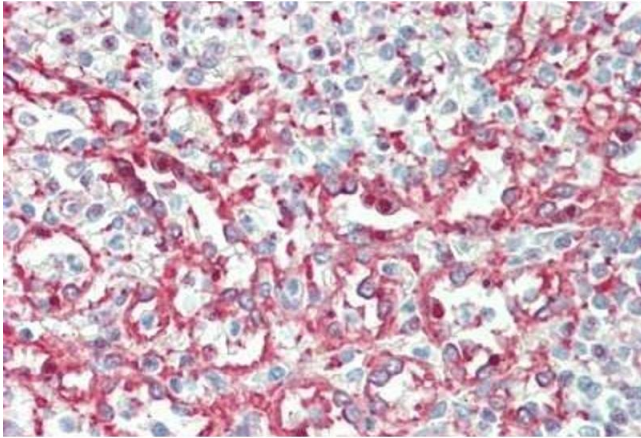
Target:	Integrin Alpha2b (CD41)
Alternative Name:	ITGA2B / CD41 (CD41 Products)
Background:	Name/Gene ID: ITGA2B Family: Integrin Synonyms: ITGA2B, BDPLT2, CD41B, GT, gp2B, Integrin alpha-IIb, ITGAB, GPIIb, HPA3, Platelet-specific antigen BAK, CD41, CD41 antigen, GPalpha IIb, GTA
Gene ID:	3674
NCBI Accession:	NP_000410
Pathways:	Integrin Complex

Application Details

Application Notes:	Approved: IHC, IHC-P (5 µg/mL), WB (1 µg/mL)
Comment:	Target Species of Antibody: Human
Restrictions:	For Research Use only

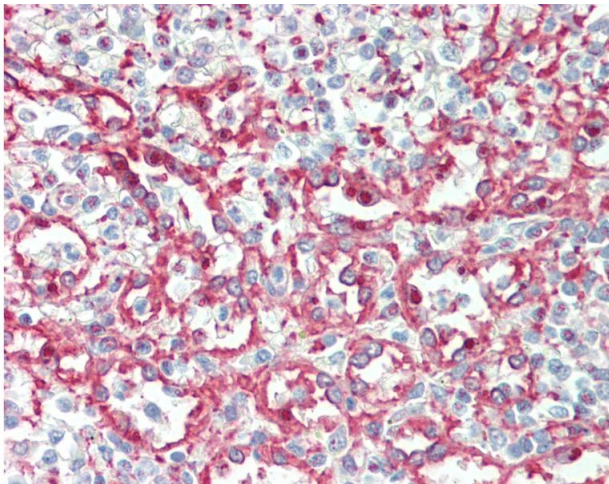
Handling

Format:	Lyophilized
Reconstitution:	Reconstitute with 50 µL sterile ddH2O.
Concentration:	Lot specific
Buffer:	Lyophilized from PBS with 2 % sucrose
Handling Advice:	Avoid repeat freeze-thaw cycles.
Storage:	4 °C,-20 °C
Storage Comment:	Long term: -20°C, the use of 50% glycerol is recommended if storing aliquots in -20°C for long term use (up to 1 year) Short term (less than 1 week): 4°C. Avoid freeze-thaw cycles.



Immunohistochemistry

Image 1. Human Spleen: Formalin-Fixed, Paraffin-Embedded (FFPE)



Immunohistochemistry

Image 2. Anti-ITGA2B / CD41 antibody IHC staining of human spleen. Immunohistochemistry of formalin-fixed, paraffin-embedded tissue after heat-induced antigen retrieval. Antibody concentration 5 ug/ml. This image was taken for the unconjugated form of this ...