

Datasheet for ABIN190758  
**anti-FH antibody (Internal Region)**

## 5 Images

[Go to Product page](#)

## Overview

|                      |  |
|----------------------|--|
| Quantity:            | 100 µg   |
| Target:              | FH   |
| Binding Specificity: | Internal Region  |
| Reactivity:          | Human  |
| Host:                | Goat   |
| Clonality:           | Polyclonal   |
| Conjugate:           | This FH antibody is un-conjugated  |
| Application:         | Western Blotting (WB), ELISA, Immunohistochemistry (IHC), Enzyme Immunoassay (EIA) |

## Product Details

|                       |   |
|-----------------------|---|
| Purpose:              | Fumarase / FH   |
| Immunogen:            | Peptide with sequence C-HPNDHVNKSQSSND, from the internal region of the protein sequence according to NP_000134.2.                    |
| Sequence:             | HPNDHVNKSQ SSND   |
| Isotype:              | IgG   |
| Predicted Reactivity: | Human, Mouse, Rat, Dog  |
| Purification:         | Purified from goat serum by ammonium sulphate precipitation followed by antigen affinity chromatography using the immunizing peptide. |
| Grade:                | Verified  |

## Target Details

|                   |  |
|-------------------|--|
| Target:           | FH   |
| Alternative Name: | Fumarate Hydratase ( <a href="#">FH Products</a> )   |
| Background:       | Fumarate hydratase, HLRCC, LRCC, MCL, MCUL1, fumarase, leiomyomatosis and renal cell cancer, multiple hereditary cutaneous leiomyomata |
| Gene ID:          | 2271   |
| NCBI Accession:   | <a href="#">NP_000134</a>  |

## Application Details

|                    |  |
|--------------------|--|
| Application Notes: | <p>DS WB Results: Approx 48 kDa band observed in Human Kidney, Liver and Lung lysates (calculated MW of 54.6 kDa according to NP_000134.2). The observed molecular weight corresponds to earlier findings with antibodies from different sources. In transfected HEK293 transiently expressing Fumarase a band of approx. 55 kDa is observed. This band is not observed in the non-transfected HEK293. Recommended concentration: 0.01-0.03 µg/mL.</p> <p>DS IHC Results: Paraffin embedded Human Skeletal Muscle and Heart. Recommended concentration: 3.75 µg/mL.</p> <p>Peptide ELISA: antibody detection limit dilution 1:64000.</p> |
| Comment:           | <b>Enzyme immunoassay:</b> Sandwich-type ELISA with increasing amount of recombinant Fumarase captured by a rabbit antibody. Recommended reporter concentration: 1-2ug/ml  |
| Restrictions:      | For Research Use only  |

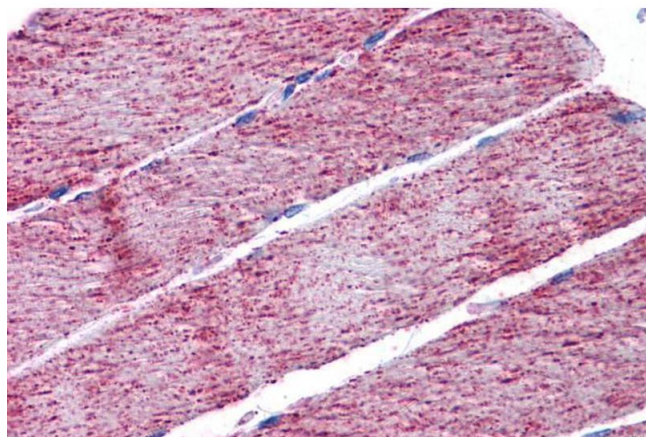
## Handling

|                    |  |
|--------------------|--|
| Format:            | Liquid   |
| Concentration:     | 0.5 mg/mL  |
| Buffer:            | Supplied at 0.5 mg/mL in Tris saline, 0.02 % sodium azide, pH 7.3 with 0.5 % bovine serum albumin.                     |
| Preservative:      | Sodium azide   |
| Precaution of Use: | This product contains Sodium azide: a POISONOUS AND HAZARDOUS SUBSTANCE which should be handled by trained staff only. |
| Handling Advice:   | Minimize freezing and thawing.   |
| Storage:           | -20 °C   |

## Handling

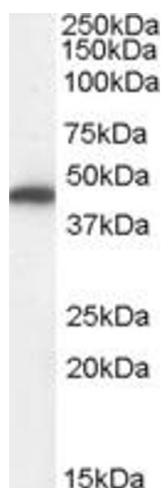
**Storage Comment:** Aliquot and store at -20°C, with minimal freeze/thawing. A working aliquot may be refrigerated at 4°C for a few weeks and still remain viable.

## Images



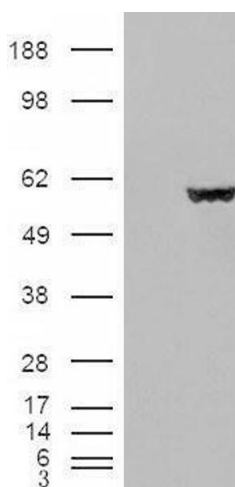
### Immunohistochemistry

**Image 1.** ABIN190758 (3.75µg/ml) staining of paraffin embedded Human Skeletal Muscle. Steamed antigen retrieval with citrate buffer pH 6, AP-staining.



### Western Blotting

**Image 2.** ABIN190758 (0.01µg/ml) staining of Human Kidney lysate (35µg protein in RIPA buffer). Primary incubation was 1 hour. Detected by chemiluminescence.



### Western Blotting

**Image 3.** HEK293 overexpressing Fumarase (ABIN5498812) and probed with ABIN190758 (mock transfection in first lane).

Please check the [product details page](#) for more images. Overall 5 images are available for ABIN190758.