

Datasheet for ABIN190761  
**anti-RER1 antibody (C-Term)**

## 1 Image

[Go to Product page](#)

## Overview

Quantity:	100 µg
Target:	RER1
Binding Specificity:	C-Term
Reactivity:	Human
Host:	Goat
Clonality:	Polyclonal
Conjugate:	This RER1 antibody is un-conjugated
Application:	ELISA, Immunohistochemistry (IHC)

## Product Details

Purpose:	RER1
Immunogen:	Peptide with sequence C-HGKRRYRGKEDAGK, from the C Terminus of the protein sequence according to NP_008964.3.
Sequence:	HGKRRYRGKE DAGK
Isotype:	IgG
Cross-Reactivity:	Human
Purification:	Purified from goat serum by ammonium sulphate precipitation followed by antigen affinity chromatography using the immunizing peptide.
Grade:	Verified

## Target Details

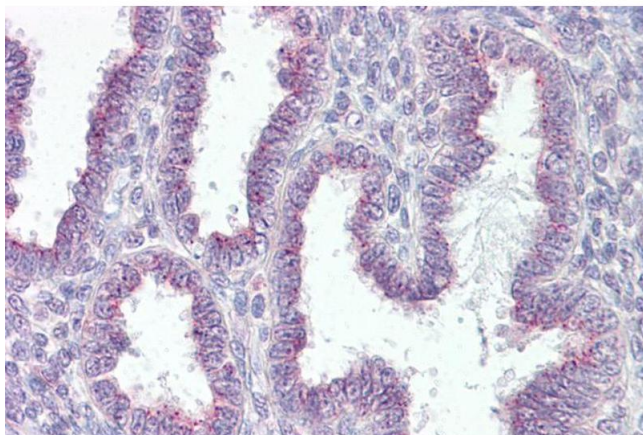
Target:	RER1
Alternative Name:	RER1 ( <a href="#">RER1 Products</a> )
Background:	RER1, RER1 retention in endoplasmic reticulum 1 homolog (S. cerevisiae), RP4-740C4.2, RER1 homolog, RER1 retention in endoplasmic reticulum 1
Gene ID:	11079, 67830
NCBI Accession:	<a href="#">NP_008964</a>

## Application Details

Application Notes:	Immunohistochemistry: Paraffin embedded Human Uterus. Recommended concentration: 3.75 µg/mL.  Western Blot: Preliminary experiments gave an approx 45 kDa band in Human Brain lysates after 0.01 µg/mL antibody staining. Please note that currently we cannot find an explanation in the literature for the band we observe given the calculated size of 22.9  Peptide ELISA: antibody detection limit dilution 1:128000.
Restrictions:	For Research Use only

## Handling

Format:	Liquid
Concentration:	0.5 mg/mL
Buffer:	Supplied at 0.5 mg/mL in Tris saline, 0.02 % sodium azide, pH 7.3 with 0.5 % bovine serum albumin.
Preservative:	Sodium azide
Precaution of Use:	This product contains Sodium azide: a POISONOUS AND HAZARDOUS SUBSTANCE which should be handled by trained staff only.
Handling Advice:	Minimize freezing and thawing.
Storage:	-20 °C
Storage Comment:	Aliquot and store at -20°C, with minimal freeze/thawing. A working aliquot may be refrigerated at 4°C for a few weeks and still remain viable.



#### Immunohistochemistry

**Image 1.** ABIN190761 (3.75µg/ml) staining of paraffin embedded Human Uterus. Steamed antigen retrieval with citrate buffer pH 6, AP-staining.