

Datasheet for ABIN1907614
anti-KDM1B antibody (N-Term)



[Go to Product page](#)

1 Image

Overview

Quantity:	0.05 mg
Target:	KDM1B
Binding Specificity:	N-Term
Reactivity:	Human, Mouse
Host:	Rabbit
Clonality:	Polyclonal
Conjugate:	This KDM1B antibody is un-conjugated
Application:	ELISA, Western Blotting (WB), Immunohistochemistry (IHC), Immunohistochemistry (Paraffin-embedded Sections) (IHC (p))

Product Details

Brand:	IHC-plus™
Isotype:	IgG
Specificity:	KDM1B antibody is human, mouse and rat reactive. At least two isoforms of KDM1B are known to exist, this KDM1B antibody will detect both isoforms.
Purification:	Immunoaffinity purified

Target Details

Target:	KDM1B
Alternative Name:	KDM1B (KDM1B Products)

Target Details

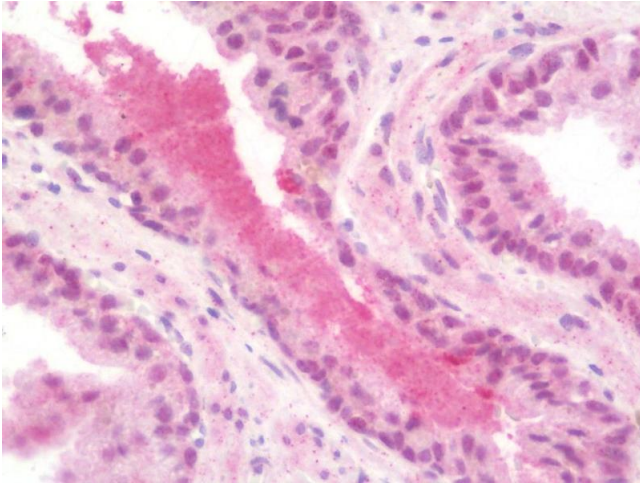
Background:	Name/Gene ID: KDM1B Synonyms: KDM1B, AOF1, BA204B7.3, C6orf193, DJ298J15.2, LSD2
Gene ID:	221656
Pathways:	Warburg Effect

Application Details

Application Notes:	Approved: ELISA, IHC, IHC-P (10 µg/mL), WB (1 - 2 µg/mL)
Comment:	Target Species of Antibody: Human
Restrictions:	For Research Use only

Handling

Format:	Liquid
Concentration:	Lot specific
Buffer:	PBS, 0.02 % sodium azide.
Preservative:	Sodium azide
Precaution of Use:	This product contains Sodium azide: a POISONOUS AND HAZARDOUS SUBSTANCE which should be handled by trained staff only.
Handling Advice:	Avoid repeat freeze-thaw cycles.
Storage:	4 °C,-20 °C
Storage Comment:	Store at 4°C for 3 months and -20°C, stable for up to 1 year. Avoid repeated freeze-thaw cycles.
Expiry Date:	12 months



Immunohistochemistry

Image 1. Anti-KDM1B antibody IHC staining of human prostate. Immunohistochemistry of formalin-fixed, paraffin-embedded tissue after heat-induced antigen retrieval. Antibody concentration 10 ug/ml.