

Datasheet for ABIN190768

anti-PTF1A antibody (Internal Region)

3 Images

1 Publication

[Go to Product page](#)

Overview

Quantity:	100 µg
Target:	PTF1A
Binding Specificity:	Internal Region
Reactivity:	Human, Mouse
Host:	Goat
Clonality:	Polyclonal
Conjugate:	This PTF1A antibody is un-conjugated
Application:	Western Blotting (WB), ELISA

Product Details

Purpose:	PTF1A / PFT1-P48
Immunogen:	Peptide with sequence C-WTDEKQLKEQN, from the internal region of the protein sequence according to NP_835455.1.
Sequence:	WTDEKQLKEQ N
Isotype:	IgG
Cross-Reactivity:	Dog, Human, Mouse, Rat, Zebrafish (Danio rerio)
Purification:	Purified from goat serum by ammonium sulphate precipitation followed by antigen affinity chromatography using the immunizing peptide.
Grade:	Verified

Target Details

Target:	PTF1A
Alternative Name:	PTF1A (PTF1A Products)
Background:	PTF1A, PTF1-p48, pancreas specific transcription factor, 1a, bHLH transcription factor p48, class II bHLH protein PTF1A, exocrine pancreas-specific transcription factor p48, p48 DNA-binding subunit of transcription factor PTF1, pancreas transcription fact
Gene ID:	256297, 19213, 117034
NCBI Accession:	NP_835455
Pathways:	Retinoic Acid Receptor Signaling Pathway

Application Details

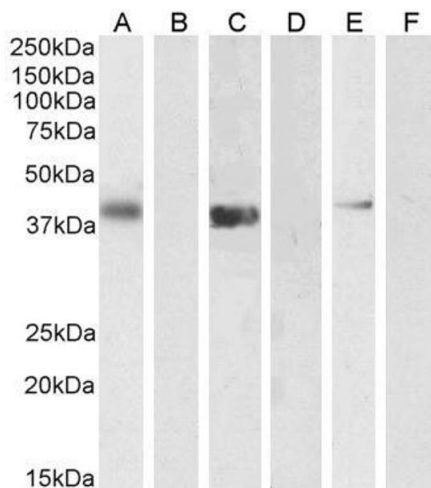
Application Notes:	Western Blot: Approx 37 kDa observe in Human Pancreas lysates and approx.38-40 kDa in lysates of cell lines Jurkat, U2OS and NIH3T3 ,(calculated MW of 35.0 kDa according to Human NP_835455.1 and 35.2 kDa according to Mouse NP_061279.2). Recommended concentra Peptide ELISA: antibody detection limit dilution 1:128000.
Restrictions:	For Research Use only

Handling

Format:	Liquid
Concentration:	0.5 mg/mL
Buffer:	Supplied at 0.5 mg/mL in Tris saline, 0.02 % sodium azide, pH 7.3 with 0.5 % bovine serum albumin.
Preservative:	Sodium azide
Precaution of Use:	This product contains Sodium azide: a POISONOUS AND HAZARDOUS SUBSTANCE which should be handled by trained staff only.
Handling Advice:	Minimize freezing and thawing.
Storage:	-20 °C
Storage Comment:	Aliquot and store at -20°C, with minimal freeze/thawing. A working aliquot may be refrigerated at 4°C for a few weeks and still remain viable.

Product cited in: Holmstrom, Deering, Swift, Poelwijk, Mangelsdorf, Kliewer, MacDonald: "LRH-1 and PTF1-L coregulate an exocrine pancreas-specific transcriptional network for digestive function." in: **Genes & development**, Vol. 25, Issue 16, pp. 1674-9, (2011) ([PubMed](#)).

Images

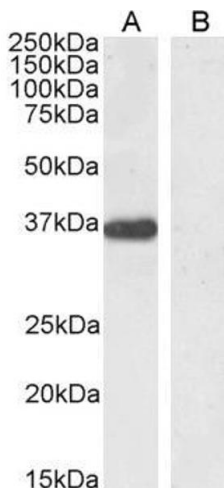


Western Blotting

Image 1. ABIN190768 (1µg/ml) staining of U2OS (A) + peptide (B), (0.5ug/ml) Jurkat (C) + peptide (D) and NIH3T3 (E) + peptide (F) cell lysate (35µg protein in RIPA buffer). Detected by chemiluminescence.



Image 2. ABIN190768 (0.5µg/ml) staining of Human Brain (Cerebellum) lysate (35µg protein in RIPA buffer). Primary incubation was 1 hour. Detected by chemiluminescence.



Western Blotting

Image 3. ABIN190768 (0.5µg/ml) staining of Human Pancreas lysate (35µg protein in RIPA buffer). Detected by chemiluminescence.