



[Go to Product page](#)

Datasheet for ABIN190769

anti-DPP4 antibody (Internal Region)

4 Images

Overview

Quantity:	100 µg
Target:	DPP4
Binding Specificity:	Internal Region
Reactivity:	Human
Host:	Goat
Clonality:	Polyclonal
Conjugate:	This DPP4 antibody is un-conjugated
Application:	Flow Cytometry (FACS), Western Blotting (WB), Immunohistochemistry (IHC), ELISA

Product Details

Purpose:	DPP4 / CD26
Immunogen:	Peptide with sequence C-PPHFDKSKKYP, from the internal region of the protein sequence according to NP_001926.2.
Sequence:	PPHFDKSKKY P
Isotype:	IgG
Cross-Reactivity:	Human, Mouse, Rat
Purification:	Purified from goat serum by ammonium sulphate precipitation followed by antigen affinity chromatography using the immunizing peptide.
Grade:	Verified

Target Details

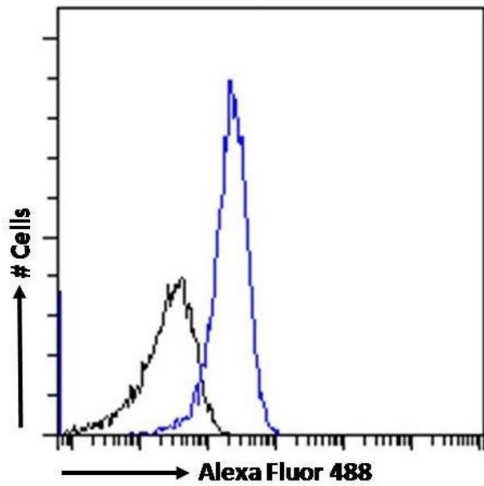
Target:	DPP4
Alternative Name:	DPP4 (DPP4 Products)
Background:	DPP4, CD26, dipeptidyl-peptidase 4 (CD26, adenosine deaminase complexing protein 2) , ADABP, ADCP2, DPPIV, TP103 , T-cell activation antigen CD26, adenosine deaminase complexing protein 2, dipeptidylpeptidase 4 (CD26, adenosine deaminase complexing prote
Gene ID:	1803, 13482, 25253
NCBI Accession:	NP_001926
Pathways:	Peptide Hormone Metabolism , Regulation of Leukocyte Mediated Immunity

Application Details

Application Notes:	Immunohistochemistry: Paraffin embedded Human Prostate. Recommended concentration: 8 µg/mL. Peptide ELISA: antibody detection limit dilution 1:64000.
Comment:	Flow Cytometry: Flow cytometric analysis of HepG2 cells. Recommended concentration: 10ug/ml.
Restrictions:	For Research Use only

Handling

Format:	Liquid
Concentration:	0.5 mg/mL
Buffer:	Supplied at 0.5 mg/mL in Tris saline, 0.02 % sodium azide, pH 7.3 with 0.5 % bovine serum albumin.
Preservative:	Sodium azide
Precaution of Use:	This product contains Sodium azide: a POISONOUS AND HAZARDOUS SUBSTANCE which should be handled by trained staff only.
Handling Advice:	Minimize freezing and thawing.
Storage:	-20 °C
Storage Comment:	Aliquot and store at -20°C, with minimal freeze/thawing. A working aliquot may be refrigerated at 4°C for a few weeks and still remain viable.



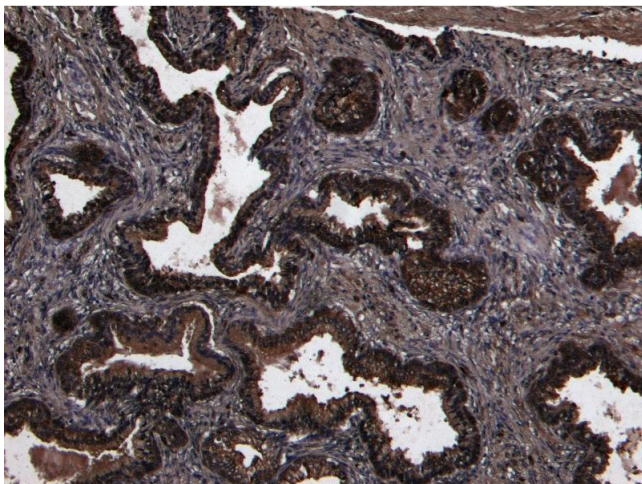
Flow Cytometry

Image 1. (ABIN190769) Flow cytometric analysis of paraformaldehyde fixed HepG2 cells (blue line), permeabilized with 0.5 % Triton. Primary incubation 1hr (10 µg/mL) followed by Alexa Fluor 488 secondary antibody (1 µg/mL). IgG control: Unimmunized goat IgG (black line) followed by Alexa Fluor 488 secondary antibody.



Western Blotting

Image 2. ABIN190769 (0.3µg/ml) staining of Rat Lung lysate (35µg protein in RIPA buffer). Detected by chemiluminescence.



Immunohistochemistry

Image 3. (ABIN190769) (8 µg/mL) staining of paraffin embedded Human Prostate. Heat induced antigen retrieval with citrate buffer pH 6, HRP-staining.

Please check the [product details page](#) for more images. Overall 4 images are available for ABIN190769.