

Datasheet for ABIN190772
anti-PODXL antibody (C-Term)[Go to Product page](#)

2 Images

Overview

Quantity:	100 µg
Target:	PODXL
Binding Specificity:	C-Term
Reactivity:	Human, Rat, Mouse
Host:	Goat
Clonality:	Polyclonal
Conjugate:	This PODXL antibody is un-conjugated
Application:	Western Blotting (WB), ELISA

Product Details

Purpose:	PODXL
Immunogen:	Peptide with sequence C-DNLTKDDLDEEEDTH, from the C Terminus of the protein sequence according to NP_001018121.1 , NP_005388.2.
Sequence:	DNLTKDDLDE EEDTH
Isotype:	IgG
Specificity:	This antibody is expected to recognise both reported isoforms (NP_001018121.1 and NP_005388.2).
Cross-Reactivity:	Dog, Human, Mouse, Rat
Purification:	Purified from goat serum by ammonium sulphate precipitation followed by antigen affinity chromatography using the immunizing peptide.

Product Details

Grade: Verified

Target Details

Target: PODXL

Alternative Name: PODXL ([PODXL Products](#))

Background: PODXL, podocalyxin-like, Gp200, MGC138240, PCLP

Gene ID: 5420, 27205, 192181

NCBI Accession: [NP_001018121](#), [NP_005388](#)

Pathways: [Tube Formation](#)

Application Details

Application Notes: Western Blot: Approx 160 kDa band observed in Human, Mouse and Rat Kidney lysates (calculated MW of 58.6 kDa according to NP_001018121.1 and 55.4 kDa according to NP_005388.2). The observed molecular weight corresponds to earlier findings in literature with Peptide ELISA: antibody detection limit dilution 1:8000.

Restrictions: For Research Use only

Handling

Format: Liquid

Concentration: 0.5 mg/mL

Buffer: Supplied at 0.5 mg/mL in Tris saline, 0.02 % sodium azide, pH 7.3 with 0.5 % bovine serum albumin.

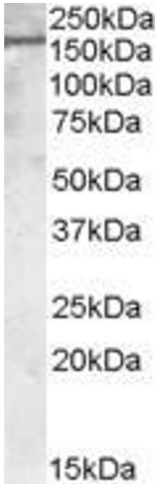
Preservative: Sodium azide

Precaution of Use: This product contains Sodium azide: a POISONOUS AND HAZARDOUS SUBSTANCE which should be handled by trained staff only.

Handling Advice: Minimize freezing and thawing.

Storage: -20 °C

Storage Comment: Aliquot and store at -20°C, with minimal freeze/thawing. A working aliquot may be refrigerated at 4°C for a few weeks and still remain viable.



Western Blotting

Image 1. ABIN190772 (1µg/ml) staining of Human Kidney lysate (35µg protein in RIPA buffer). Primary incubation was 1 hour. Detected by chemiluminescence.



Western Blotting

Image 2. ABIN190772 (0.5µg/ml) staining of Human Kidney lysate (35µg protein in RIPA buffer). Primary incubation was 1 hour. Detected by chemiluminescence.