

Datasheet for ABIN190778 **anti-GABPB2 antibody (Internal Region)**

[Go to Product page](#)

7 Images

Overview

Quantity:	100 µg
Target:	GABPB2
Binding Specificity:	Internal Region
Reactivity:	Human
Host:	Goat
Clonality:	Polyclonal
Conjugate:	This GABPB2 antibody is un-conjugated
Application:	Western Blotting (WB), ELISA, Immunohistochemistry (IHC), Immunofluorescence (IF), Flow Cytometry (FACS)

Product Details

Purpose:	GABPB2
Immunogen:	Peptide with sequence C-SSENSSKATDETG, from the internal region of the protein sequence according to NP_005245.2, NP_002032.2.
Sequence:	SSENSSKATD ETG
Isotype:	IgG
Cross-Reactivity:	Dog, Human
Purification:	Purified from goat serum by ammonium sulphate precipitation followed by antigen affinity chromatography using the immunizing peptide.
Grade:	Verified

Target Details

Target:	GABPB2
Alternative Name:	GABPB2 (GABPB2 Products)
Background:	GABPB2, GA binding protein transcription factor, beta subunit 2, BABPB2, E4TF1, E4TF1-47, E4TF1-53, E4TF1B, GABPB, GABPB1, NRF2B1, NRF2B2, GA binding protein transcription factor, beta subunit 1, 53 kDa, GA binding protein transcription factor, beta subunit 1
Gene ID:	2553
NCBI Accession:	NP_005245 , NP_002032 , NP_001307844

Application Details

Application Notes:	Immunohistochemistry: Paraffin embedded Human Tonsil and Spleen. Recommended concentration: 3.75 µg/mL. Western Blot: Approx 45+38 kDa bands observed in lysates of cell line HeLa (calculated MW of 42.5 kDa according to NP_005245.2, NP_001307844.1 and of 38.1 kDa according to NP_002032.2). An additional band of unknown identity was also consistently observed Peptide ELISA: antibody detection limit dilution 1:32000.
Comment:	Immunofluorescence: Strong expression of the protein seen in the nuclei of HeLa and U2OS cells. Recommended concentration: 10µg/ml. Flow Cytometry: Flow cytometric analysis of HEK293 cells. Recommended concentration: 1
Restrictions:	For Research Use only

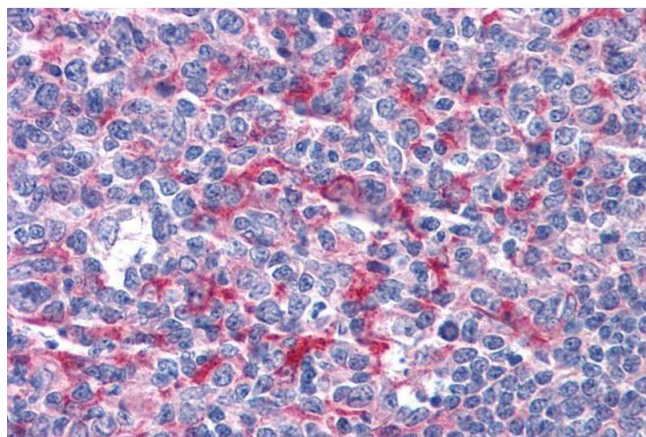
Handling

Format:	Liquid
Concentration:	0.5 mg/mL
Buffer:	Supplied at 0.5 mg/mL in Tris saline, 0.02 % sodium azide, pH 7.3 with 0.5 % bovine serum albumin.
Preservative:	Sodium azide
Precaution of Use:	This product contains Sodium azide: a POISONOUS AND HAZARDOUS SUBSTANCE which should be handled by trained staff only.
Handling Advice:	Minimize freezing and thawing.
Storage:	-20 °C

Handling

Storage Comment: Aliquot and store at -20°C, with minimal freeze/thawing. A working aliquot may be refrigerated at 4°C for a few weeks and still remain viable.

Images



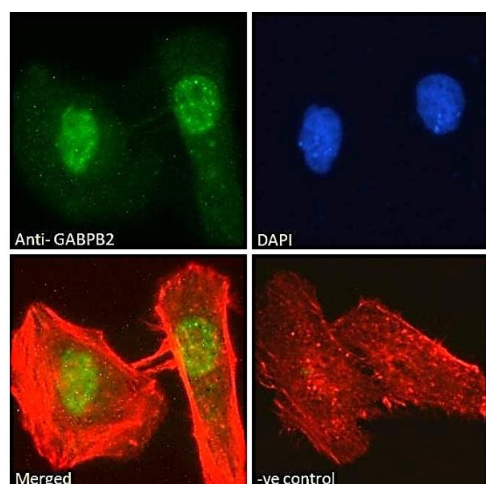
Immunohistochemistry

Image 1. ABIN190778 (3.75µg/ml) staining of paraffin embedded Human Tonsil. Steamed antigen retrieval with citrate buffer pH 6, AP-staining.



Western Blotting

Image 2. ABIN190778 (0.3µg/ml) staining of HeLa cell lysate (A) + peptide (B) (35µg protein in RIPA buffer). Detected by chemiluminescence.



Immunofluorescence

Image 3. ABIN190778 Immunofluorescence analysis of paraformaldehyde fixed HeLa cells, permeabilized with 0.15% Triton. Primary incubation 1hr (10ug/ml) followed by Alexa Fluor 488 secondary antibody (2ug/ml), showing nuclear/nuclear speckle staining. Actin filaments were stained with phalloidin (red) and the nuclear stain is DAPI (blue). Negative control: Unimmunized goat IgG (10ug/ml) followed by Alexa Fluor 488 secondary antibody (2ug/ml).

Please check the [product details page](#) for more images. Overall 7 images are available for ABIN190778.