



[Go to Product page](#)

Datasheet for ABIN190787

anti-SALL4 antibody (Internal Region)

1 Image

Overview

Quantity:	100 µg
Target:	SALL4
Binding Specificity:	Internal Region
Reactivity:	Rat
Host:	Goat
Clonality:	Polyclonal
Conjugate:	This SALL4 antibody is un-conjugated
Application:	Western Blotting (WB), ELISA

Product Details

Purpose:	Sall4 (mouse)
Immunogen:	Peptide with sequence C-DQSKKGKGPQN, from the internal region of the protein sequence according to NP_780512.2, NP_958797.2, NP_958798.2.
Sequence:	DQSKKGKGP QN
Isotype:	IgG
Specificity:	This antibody is expected to recognize isoform a (NP_780512.2) and isoform b (NP_958797.2).
Cross-Reactivity:	Mouse
Purification:	Purified from goat serum by ammonium sulphate precipitation followed by antigen affinity chromatography using the immunizing peptide.
Grade:	Verified

Target Details

Target:	SALL4
Alternative Name:	Sall4 (SALL4 Products)
Background:	SALL4, sal-like 4 (Drosophila) , AA407717, AL022809, AW536104, C330011P20Rik, C78083, C78563, Tex20, sal-like 4
Gene ID:	99377
NCBI Accession:	NP_780512 , NP_958797 , NP_958798
Pathways:	Stem Cell Maintenance , Tube Formation

Application Details

Application Notes:	Western Blot: Approx 70 kDa band observed in Rat Spleen and Testis lysates (calculated MW of 66.2 kDa according to NP_958797.2). Recommended concentration: 0.1-0.3 µg/mL. Additional bands of unknown identity was also consistently observed at 28+24 kDa. Theses Peptide ELISA: antibody detection limit dilution 1:32000.
Restrictions:	For Research Use only

Handling

Format:	Liquid
Concentration:	0.5 mg/mL
Buffer:	Supplied at 0.5 mg/mL in Tris saline, 0.02 % sodium azide, pH 7.3 with 0.5 % bovine serum albumin.
Preservative:	Sodium azide
Precaution of Use:	This product contains Sodium azide: a POISONOUS AND HAZARDOUS SUBSTANCE which should be handled by trained staff only.
Handling Advice:	Minimize freezing and thawing.
Storage:	-20 °C
Storage Comment:	Aliquot and store at -20°C, with minimal freeze/thawing. A working aliquot may be refrigerated at 4°C for a few weeks and still remain viable.

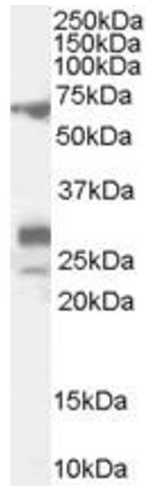


Image 1. ABIN190787 (0.1µg/ml) staining of Rat Testis lysate (35µg protein in RIPA buffer). Primary incubation was 1 hour. Detected by chemiluminescence.