



[Go to Product page](#)

Datasheet for ABIN1907928

anti-MTCL1 / SOGA2 antibody (AA 13-202)

2 Images

Overview

Quantity:	50 µL
Target:	MTCL1 / SOGA2 (MTCL1)
Binding Specificity:	AA 13-202
Reactivity:	Human
Host:	Rabbit
Clonality:	Polyclonal
Conjugate:	This MTCL1 / SOGA2 antibody is un-conjugated
Application:	Western Blotting (WB), ELISA, Immunohistochemistry (IHC), Immunohistochemistry (Paraffin-embedded Sections) (IHC (p))

Product Details

Brand:	IHC-plus™
Immunogen:	A recombinant human KIAA0802 protein 13-202aa (BC040542). Type of Immunogen: Recombinant protein
Specificity:	Human KIAA0802.
Purification:	Affinity purified

Target Details

Target:	MTCL1 / SOGA2 (MTCL1)
Alternative Name:	MTCL1 / SOGA2 (MTCL1 Products)

Target Details

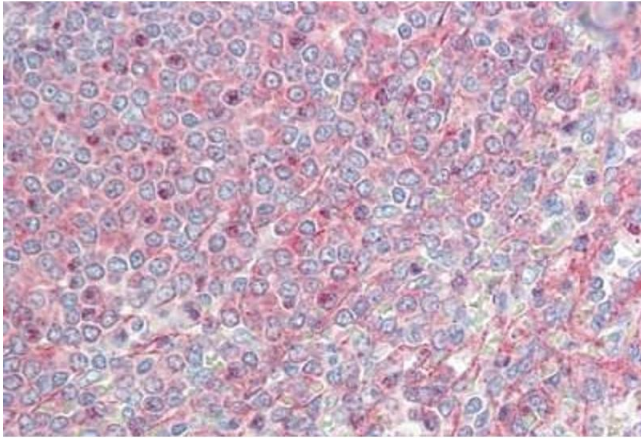
Background:	Name/Gene ID: MTCL1 Synonyms: MTCL1, CCDC165, Protein SOGA2, SOGA family member 2, SOGA2, KIAA0802
Gene ID:	23255

Application Details

Application Notes:	Approved: ELISA (1:20000 - 1:80000), IHC, IHC-P (10 µg/mL), WB (1:1000 - 1:2000)
Comment:	Target Species of Antibody: Human
Restrictions:	For Research Use only

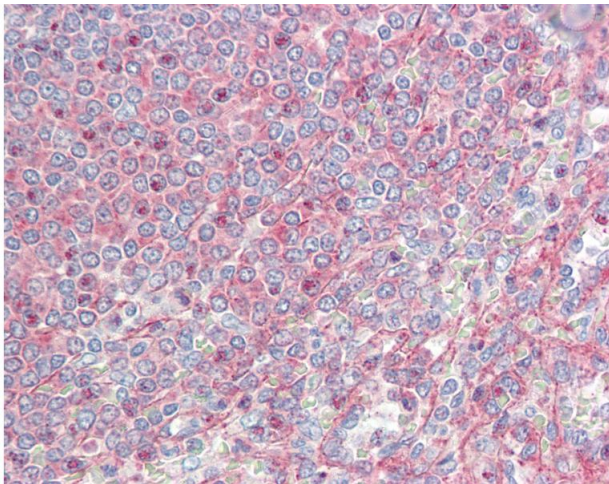
Handling

Format:	Liquid
Concentration:	Lot specific
Buffer:	PBS, pH 7.4, 0.02 % sodium azide
Preservative:	Sodium azide
Precaution of Use:	This product contains Sodium azide: a POISONOUS AND HAZARDOUS SUBSTANCE which should be handled by trained staff only.
Storage:	-20 °C
Storage Comment:	Store at -20°C for up to 1 year.
Expiry Date:	12 months



Immunohistochemistry

Image 1. Human Spleen: Formalin-Fixed, Paraffin-Embedded (FFPE)



Immunohistochemistry

Image 2. Human Spleen: Formalin-Fixed, Paraffin-Embedded (FFPE)