



[Go to Product page](#)

Datasheet for ABIN190795

## anti-TACR1 antibody (Internal Region)

### 3 Images

#### Overview

Quantity:	100 µg
Target:	TACR1
Binding Specificity:	Internal Region
Reactivity:	Human, Mouse
Host:	Goat
Clonality:	Polyclonal
Conjugate:	This TACR1 antibody is un-conjugated
Application:	Western Blotting (WB), ELISA, Immunofluorescence (IF)

#### Product Details

Purpose:	TACR1
Immunogen:	Peptide with sequence C-EIPGDSSDRYHEQ, from the internal region of the protein sequence according to NP_001049.1*, NP_056542.1*.
Sequence:	EIPGDSSDRY HEQ
Isotype:	IgG
Specificity:	This antibody is expected to recognise both reported isoforms (NP_001049.1 and NP_056542.1).
Cross-Reactivity:	Dog, Human, Mouse
Purification:	Purified from goat serum by ammonium sulphate precipitation followed by antigen affinity chromatography using the immunizing peptide.

## Product Details

---

Grade: Verified

## Target Details

---

Target: TACR1

Alternative Name: TACR1 ([TACR1 Products](#))

Background: TACR1, tachykinin receptor 1, NK1R, neurokinin 1 receptor, NK1R, SPR, TAC1R, NK-1 receptor, Tachykinin receptor 1 (substance P receptor, neurokinin-1 receptor), neurokinin 1 receptor, tachykinin 1 receptor (substance P receptor, neurokinin 1 receptor)

Gene ID: 6869, 21336, 24807

Pathways: [Regulation of Systemic Arterial Blood Pressure by Hormones](#), [Feeding Behaviour](#), [Smooth Muscle Cell Migration](#)

## Application Details

---

Application Notes: Western Blot: Approx 48 kDa band observed in lysates of cell lines HeLa and Neuro2a (calculated MW of 46.3 kDa according to Human NP\_001049.1 and Mouse NP\_033339.2).  
Recommended concentration: 0.3-1 µg/mL. Primary incubation 1 hour at room temperature.  
Peptide ELISA: antibody detection limit dilution 1:128000.

Comment: **Immunofluorescence:** Expression of the protein seen in the plasma membrane and nucleus of Neuro2a cells. Recommended concentration: 10µg/ml.

Restrictions: For Research Use only

## Handling

---

Format: Liquid

Concentration: 0.5 mg/mL

Buffer: Supplied at 0.5 mg/mL in Tris saline, 0.02 % sodium azide, pH 7.3 with 0.5 % bovine serum albumin.

Preservative: Sodium azide

Precaution of Use: This product contains Sodium azide: a POISONOUS AND HAZARDOUS SUBSTANCE which should be handled by trained staff only.

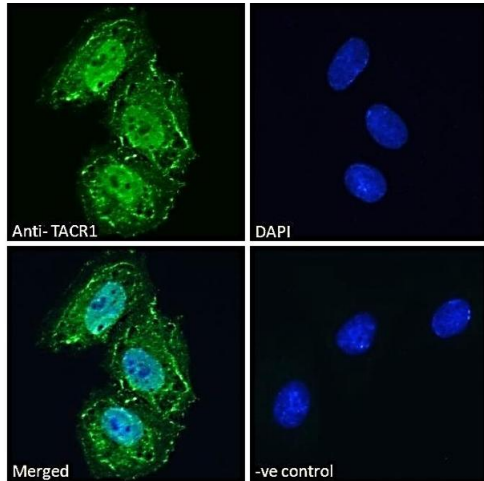
Handling Advice: Minimize freezing and thawing.

## Handling

Storage: -20 °C

Storage Comment: Aliquot and store at -20°C, with minimal freeze/thawing. A working aliquot may be refrigerated at 4°C for a few weeks and still remain viable.

## Images

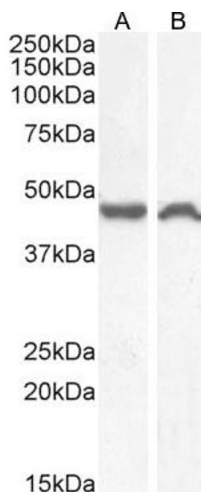


### Immunofluorescence

**Image 1.** (ABIN190795) Immunofluorescence analysis of paraformaldehyde fixed Neuro2a cells, permeabilized with 0.15 % Triton. Primary incubation 1hr (10 µg/mL) followed by Alexa Fluor 488 secondary antibody (2 µg/mL), showing nuclear and plasma membrane staining. The nuclear stain is DAPI (blue). Negative control: Unimmunized goat IgG (10 µg/mL) followed by Alexa Fluor 488 secondary antibody (2 µg/mL).



**Image 2.** ABIN190795 (1 µg/ml) staining of Human Testes lysate (35 µg protein in RIPA buffer). Primary incubation was 1 hour. Detected by chemiluminescence.



### Western Blotting

**Image 3.** (ABIN190795) (1 µg/mL) staining of HeLa (A) and (0.5 µg/mL) Neuro2a (B) cell lysate (35 µg protein in RIPA buffer). Detected by chemiluminescence.