

Datasheet for ABIN190798
anti-PSME1 antibody (C-Term)[Go to Product page](#)

1 Image

Overview

Quantity:	100 µg
Target:	PSME1
Binding Specificity:	C-Term
Reactivity:	Human
Host:	Goat
Clonality:	Polyclonal
Conjugate:	This PSME1 antibody is un-conjugated
Application:	Western Blotting (WB), ELISA

Product Details

Purpose:	PSME1 (isoform 1)
Immunogen:	Peptide with sequence C-KNFEKLKKPRGETK, from the C Terminus of the protein sequence according to NP_006254.1.
Sequence:	KNFEKLKKPR GETK
Isotype:	IgG
Specificity:	This antibody is expected to recognise isoform 1 (NP_006254.1).
Cross-Reactivity:	Dog, Human, Mouse, Rat
Purification:	Purified from goat serum by ammonium sulphate precipitation followed by antigen affinity chromatography using the immunizing peptide.
Grade:	Verified

Target Details

Target:	PSME1
Alternative Name:	PSME1 (PSME1 Products)
Background:	PSME1, proteasome (prosome, macropain) activator subunit 1 (PA28 alpha), IFI5111, MGC8628, PA28A, PA28alpha, REGalpha, 11S regulator complex alpha subunit, 29-kD MCP activator subunit, activator of multicatalytic protease subunit 1, interferon gamma up-r
Gene ID:	5720, 19186, 29630
NCBI Accession:	NP_006254
Pathways:	Mitotic G1-G1/S Phases , DNA Replication , Positive Regulation of Endopeptidase Activity , Synthesis of DNA

Application Details

Application Notes:	Western Blot: Approx 30 kDa band observed in Human Lymph Node, Spleen, Tonsil and Peripheral Blood Mononuceocyte lysates (calculated MW of 28.7 kDa according to NP_006254.1). Recommended concentration: 0.3-1 µg/mL. Peptide ELISA: antibody detection limit dilution 1:64000.
Restrictions:	For Research Use only

Handling

Format:	Liquid
Concentration:	0.5 mg/mL
Buffer:	Supplied at 0.5 mg/mL in Tris saline, 0.02 % sodium azide, pH 7.3 with 0.5 % bovine serum albumin.
Preservative:	Sodium azide
Precaution of Use:	This product contains Sodium azide: a POISONOUS AND HAZARDOUS SUBSTANCE which should be handled by trained staff only.
Handling Advice:	Minimize freezing and thawing.
Storage:	-20 °C
Storage Comment:	Aliquot and store at -20°C, with minimal freeze/thawing. A working aliquot may be refrigerated at 4°C for a few weeks and still remain viable.

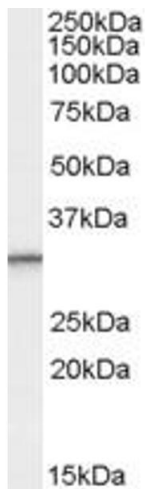


Image 1. ABIN190798 (0.3µg/ml) staining of Human Peripheral Blood Mononucleocyte lysate (35µg protein in RIPA buffer). Primary incubation was 1 hour. Detected by chemiluminescence.