

Datasheet for ABIN190809  
**anti-CHD5 antibody (Internal Region)**

## 2 Images

[Go to Product page](#)

## Overview

Quantity:	100 µg
Target:	CHD5
Binding Specificity:	Internal Region
Reactivity:	Human
Host:	Goat
Clonality:	Polyclonal
Conjugate:	This CHD5 antibody is un-conjugated
Application:	ELISA, Immunofluorescence (IF), Flow Cytometry (FACS)

## Product Details

Purpose:	CHD5
Immunogen:	Peptide with sequence C-QSRRQLKSDRDKP, from the internal region of the protein sequence according to NP_056372.1 .
Sequence:	QSRRQLKSDR DKP
Isotype:	IgG
Cross-Reactivity:	Dog, Human, Mouse, Rat
Purification:	Purified from goat serum by ammonium sulphate precipitation followed by antigen affinity chromatography using the immunizing peptide.
Grade:	Verified

## Target Details

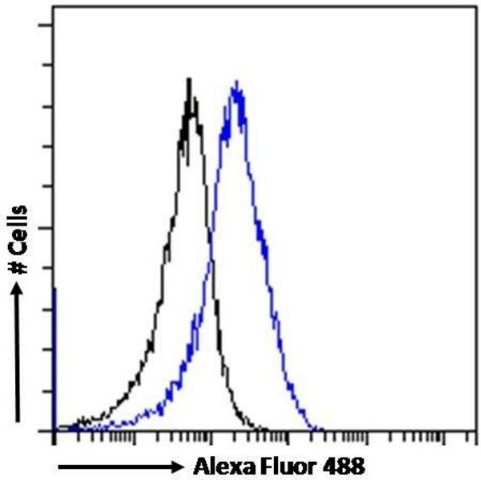
Target:	CHD5
Alternative Name:	CHD5 ( <a href="#">CHD5 Products</a> )
Background:	CHD5, chromodomain helicase DNA binding protein 5 , DKFZp434N231, KIAA0444
Gene ID:	26038, 269610
NCBI Accession:	<a href="#">NP_056372</a>

## Application Details

Application Notes:	Peptide ELISA: antibody detection limit dilution 1:64000.
Comment:	<b>Immunofluorescence:</b> Strong expression of the protein seen in the nuclei and cytoplasm of U2OS cells. Recommended concentration: 10µg/ml. <b>Flow Cytometry:</b> Flow cytometric analysis of MCF7 cells. Recommended concentration
Restrictions:	For Research Use only

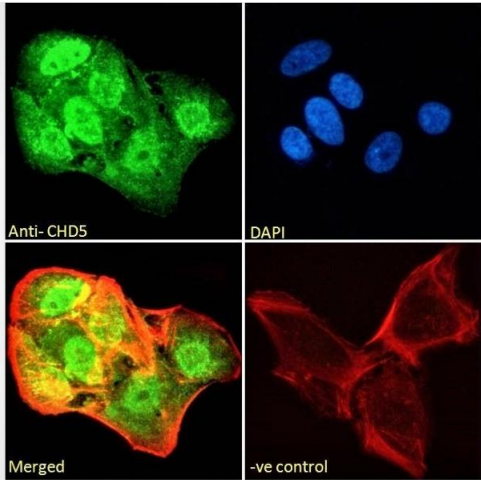
## Handling

Format:	Liquid
Concentration:	0.5 mg/mL
Buffer:	Supplied at 0.5 mg/mL in Tris saline, 0.02 % sodium azide, pH 7.3 with 0.5 % bovine serum albumin.
Preservative:	Sodium azide
Precaution of Use:	This product contains Sodium azide: a POISONOUS AND HAZARDOUS SUBSTANCE which should be handled by trained staff only.
Handling Advice:	Minimize freezing and thawing.
Storage:	-20 °C
Storage Comment:	Aliquot and store at -20°C, with minimal freeze/thawing. A working aliquot may be refrigerated at 4°C for a few weeks and still remain viable.



Flow Cytometry

**Image 1.** (ABIN190809) Flow cytometric analysis of paraformaldehyde fixed MCF7 cells (blue line), permeabilized with 0.5 % Triton. Primary incubation 1hr (10 µg/mL) followed by Alexa Fluor 488 secondary antibody (1 µg/mL). IgG control: Unimmunized goat IgG (black line) fol



Immunofluorescence

**Image 2.** (ABIN190809) Immunofluorescence analysis of paraformaldehyde fixed U2OS cells, permeabilized with 0.15 % Triton. Primary incubation 1hr (10 µg/mL) followed by Alexa Fluor 488 secondary antibody (2 µg/mL), showing nuclear and cytoplasmic staining. Actin filaments