

Datasheet for ABIN190810
anti-CLIC4 antibody (N-Term)

3 Images

[Go to Product page](#)

Overview

Quantity:	100 µg
Target:	CLIC4
Binding Specificity:	N-Term
Reactivity:	Human, Mouse
Host:	Goat
Clonality:	Polyclonal
Conjugate:	This CLIC4 antibody is un-conjugated
Application:	Western Blotting (WB), Immunohistochemistry (IHC), ELISA, Immunofluorescence (IF)

Product Details

Purpose:	CLIC4
Immunogen:	Peptide with sequence NGLKEEDKEPLIE-C, from the N Terminus of the protein sequence according to NP_039234.1.
Sequence:	NGLKEEDKEP LIE
Isotype:	IgG
Cross-Reactivity:	Dog, Human, Mouse, Rat
Purification:	Purified from goat serum by ammonium sulphate precipitation followed by antigen affinity chromatography using the immunizing peptide.
Grade:	Verified

Target Details

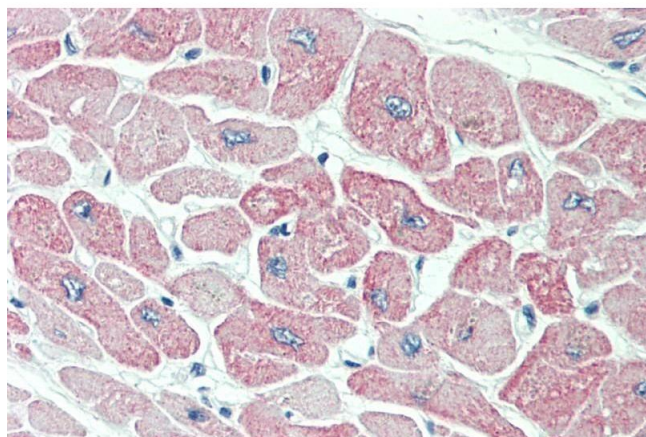
Target:	CLIC4
Alternative Name:	CLIC4 (CLIC4 Products)
Background:	CLIC4, chloride intracellular channel 4, CLIC4L, DKFZP566G223, FLJ38640, H1, huH1, p64H1 , chloride intracellular channel 4 like
Gene ID:	25932, 29876, 83718
NCBI Accession:	NP_039234

Application Details

Application Notes:	Immunohistochemistry: Paraffin embedded Human Heart. Recommended concentration: 5 µg/mL. Western Blot: Approx 30 kDa band observed in Human Kidney and Placenta lysates (calculated MW of 28.8 kDa according to NP_039234.1). The observed molecular weight corresponds to earlier findings in literature with different antibodies (Edwards et al, Am J Peptide ELISA: antibody detection limit dilution 1:64000.
Comment:	Immunofluorescence: Min6 cells transiently expressing mouse Clic4 shows cytoplasmic staining of two cells. Recommended concentration, 5µg/ml with overnight incubation.
Restrictions:	For Research Use only

Handling

Format:	Liquid
Concentration:	0.5 mg/mL
Buffer:	Supplied at 0.5 mg/mL in Tris saline, 0.02 % sodium azide, pH 7.3 with 0.5 % bovine serum albumin.
Preservative:	Sodium azide
Precaution of Use:	This product contains Sodium azide: a POISONOUS AND HAZARDOUS SUBSTANCE which should be handled by trained staff only.
Handling Advice:	Minimize freezing and thawing.
Storage:	-20 °C
Storage Comment:	Aliquot and store at -20°C, with minimal freeze/thawing. A working aliquot may be refrigerated at 4°C for a few weeks and still remain viable.



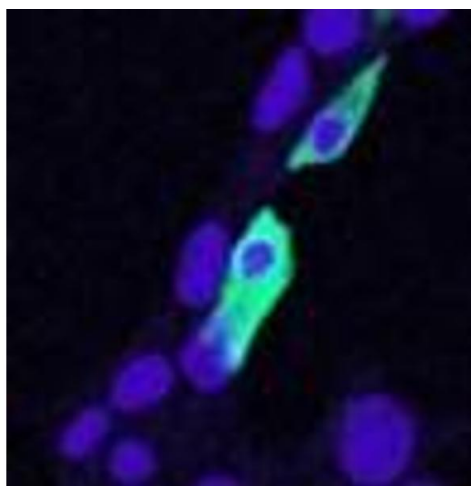
Immunohistochemistry

Image 1. ABIN190810 (5µg/ml) staining of paraffin embedded Human Heart. Steamed antigen retrieval with citrate buffer pH 6, AP-staining.



Western Blotting

Image 2. ABIN190810 (0.1µg/ml) staining of Human Kidney lysate (35µg protein in RIPA buffer). Primary incubation was 1 hour. Detected by chemiluminescence.



Immunofluorescence

Image 3. ABIN190810 (5ug/ml) staining of min6 cells transiently expressing mouse Clic4. Nuclear counter staining by Hoechst. Data kindly provided by Dr. Virginie Nepote, Lausanne University, Switzerland.