

Datasheet for ABIN190816  
**anti-PLIN3 antibody (Internal Region)**[Go to Product page](#)

## 2 Images

## Overview

|                      |                                      |
|----------------------|--------------------------------------|
| Quantity:            | 100 µg                               |
| Target:              | PLIN3                                |
| Binding Specificity: | Internal Region                      |
| Reactivity:          | Mouse                                |
| Host:                | Goat                                 |
| Clonality:           | Polyclonal                           |
| Conjugate:           | This PLIN3 antibody is un-conjugated |
| Application:         | ELISA, Immunofluorescence (IF)       |

## Product Details

|                   |   |
|-------------------|---|
| Purpose:          | M6prbp1 (mouse)   |
| Immunogen:        | C-NQKTPQDAEKDPAK  |
| Sequence:         | NQKTPQDAEK DPAK   |
| Isotype:          | IgG   |
| Cross-Reactivity: | Mouse, Rat  |
| Purification:     | Purified from goat serum by ammonium sulphate precipitation followed by antigen affinity chromatography using the immunizing peptide. |
| Grade:            | Verified  |

### Target Details

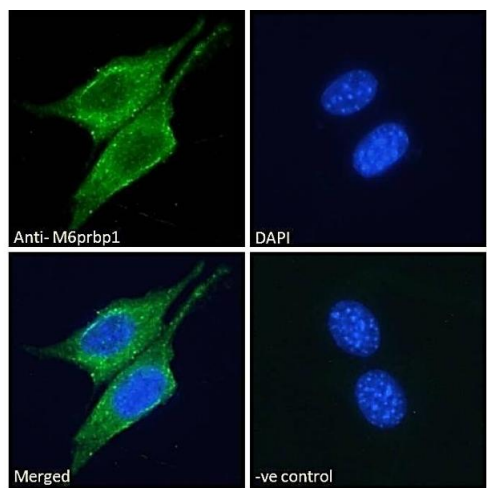
|                   |  |
|-------------------|--|
| Target:           | PLIN3  |
| Alternative Name: | Plin3 ( <a href="#">PLIN3 Products</a> )                               |
| Background:       | M6prbp1, mannose-6-phosphate receptor binding protein 1, 1300012C15Rik |
| Gene ID:          | 66905, 316130  |
| NCBI Accession:   | <a href="#">NP_080112</a>  |

### Application Details

|                    |  |
|--------------------|--|
| Application Notes: | Peptide ELISA: antibody detection limit dilution 1:32000.  |
| Comment:           | <b>Immunofluorescence:</b> Expression of the protein seen within lipid droplets and the cytoplasm of NIH3T3 cells. Recommended concentration: 10µg/ml. |
| Restrictions:      | For Research Use only  |

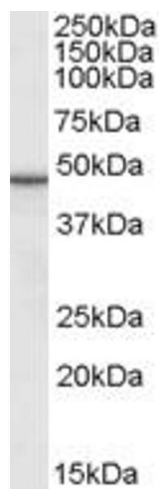
### Handling

|                    |  |
|--------------------|--|
| Format:            | Liquid   |
| Concentration:     | 0.5 mg/mL  |
| Buffer:            | Supplied at 0.5 mg/mL in Tris saline, 0.02 % sodium azide, pH 7.3 with 0.5 % bovine serum albumin.   |
| Preservative:      | Sodium azide   |
| Precaution of Use: | This product contains Sodium azide: a POISONOUS AND HAZARDOUS SUBSTANCE which should be handled by trained staff only.                         |
| Handling Advice:   | Minimize freezing and thawing.   |
| Storage:           | -20 °C   |
| Storage Comment:   | Aliquot and store at -20°C, with minimal freeze/thawing. A working aliquot may be refrigerated at 4°C for a few weeks and still remain viable. |



Immunofluorescence

**Image 1.** (ABIN190816) Immunofluorescence analysis of paraformaldehyde fixed NIH3T3 cells, permeabilized with 0.15 % Triton. Primary incubation 1hr (10 µg/mL) followed by Alexa Fluor 488 secondary antibody (2 µg/mL), showing cytoplasmic and lipid droplet staining. The nuclei



**Image 2.** ABIN190816 (0.1µg/ml) staining of Rat Skin lysate (35µg protein in RIPA buffer). Primary incubation was 1 hour. Detected by chemiluminescence.