



[Go to Product page](#)

Datasheet for ABIN190823

anti-CYLD antibody (Internal Region)

2 Images

Overview

Quantity:	100 µg
Target:	CYLD
Binding Specificity:	Internal Region
Reactivity:	Mouse, Rat
Host:	Goat
Clonality:	Polyclonal
Conjugate:	This CYLD antibody is un-conjugated
Application:	Western Blotting (WB), ELISA, Immunohistochemistry (IHC)

Product Details

Purpose:	Cyld (mouse)
Immunogen:	Peptide with sequence C-DSQQSKSKNPWYIDE, from the internal region of the protein sequence according to NP_775545.1.
Sequence:	DSQQSKSKNP WYIDE
Isotype:	IgG
Cross-Reactivity:	Mouse, Rat
Purification:	Purified from goat serum by ammonium sulphate precipitation followed by antigen affinity chromatography using the immunizing peptide.
Grade:	Verified

Target Details

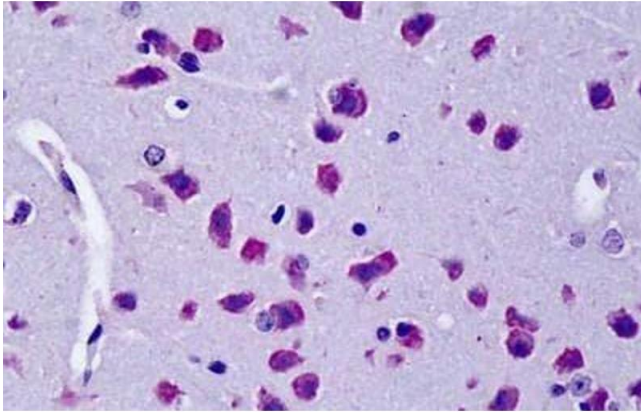
Target:	CYLD
Alternative Name:	Cyld (CYLD Products)
Background:	CYLD, cylindromatosis (turban tumor syndrome) , 2010013M14Rik, 2900009M21Rik, C130039D01Rik, CDMT, CYLD1, EAC, mKIAA0849, ubiquitin carboxyl-terminal hydrolase CYLD
Gene ID:	74256, 312937
NCBI Accession:	NP_775545
Pathways:	Apoptosis , Activation of Innate immune Response

Application Details

Application Notes:	Immunohistochemistry: Paraffin embedded Mouse Brain. Recommended concentration: 5 µg/mL. Western Blot: Approx 125 kDa band observed in Rat Brain lysates (calculated MW of 107 kDa according to mouse NP_775545.1). Recommended concentration: 0.5-1.5 µg/mL. Peptide ELISA: antibody detection limit dilution 1:32000.
Restrictions:	For Research Use only

Handling

Format:	Liquid
Concentration:	0.5 mg/mL
Buffer:	Supplied at 0.5 mg/mL in Tris saline, 0.02 % sodium azide, pH 7.3 with 0.5 % bovine serum albumin.
Preservative:	Sodium azide
Precaution of Use:	This product contains Sodium azide: a POISONOUS AND HAZARDOUS SUBSTANCE which should be handled by trained staff only.
Handling Advice:	Minimize freezing and thawing.
Storage:	-20 °C
Storage Comment:	Aliquot and store at -20°C, with minimal freeze/thawing. A working aliquot may be refrigerated at 4°C for a few weeks and still remain viable.



Immunohistochemistry

Image 1. ABIN190823 (5 μ g/ml) staining of paraffin embedded Mouse Brain. Steamed antigen retrieval with citrate buffer pH 6, AP-staining.



Image 2. ABIN190823 (0.5 μ g/ml) staining of rat brain lysate (35 μ g protein in RIPA buffer). Primary incubation was 1 hour. Detected by chemiluminescence.