

Datasheet for ABIN190832  
**anti-HRH1 antibody (Internal Region)**[Go to Product page](#)

## 2 Images

## Overview

Quantity:	100 µg
Target:	HRH1
Binding Specificity:	Internal Region
Reactivity:	Human
Host:	Goat
Clonality:	Polyclonal
Conjugate:	This HRH1 antibody is un-conjugated
Application:	ELISA, Western Blotting (WB), Immunohistochemistry (IHC)

## Product Details

Purpose:	Histamine receptor H1(internal)
Immunogen:	Peptide with sequence QQTSVRREDKCETD, from the internal region of the protein sequence according to NP_000852.1.
Sequence:	QQTSVRREDK CETD
Isotype:	IgG
Cross-Reactivity:	Human
Purification:	Purified from goat serum by ammonium sulphate precipitation followed by antigen affinity chromatography using the immunizing peptide.
Grade:	Verified

## Target Details

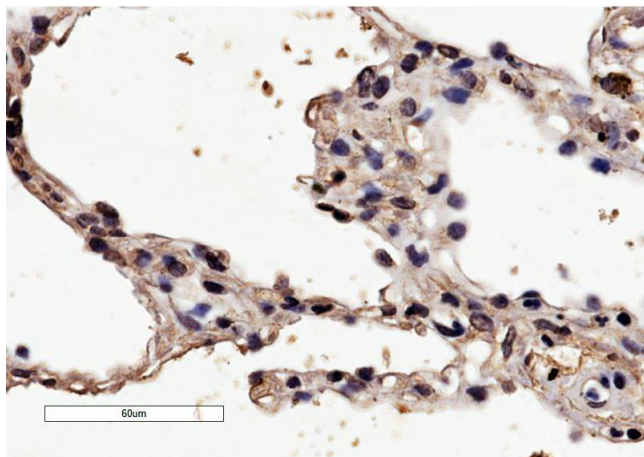
Target:	HRH1
Alternative Name:	HRH1 ( <a href="#">HRH1 Products</a> )
Background:	Histamine receptor H1, H1-R, HRH1, hisH1 , histamine receptor, subclass H1
Gene ID:	3269
NCBI Accession:	<a href="#">NP_000852</a>
Pathways:	<a href="#">Regulation of Carbohydrate Metabolic Process</a>

## Application Details

Application Notes:	Immunohistochemistry: In paraffin embedded Human Lung shows membranous staining of epithelial cells in tertiary bronchus and in alveoli. Recommended concentration, 2-4 µg/mL. Western Blot: Approx 55 kDa band observed in Human Heart lysates (calculated MW of 55.8 kDa according to NP_000852.1). Recommended concentration: 0.5-1.5 µg/mL. Peptide ELISA: antibody detection limit dilution 1:16000.
Restrictions:	For Research Use only

## Handling

Format:	Liquid
Concentration:	0.5 mg/mL
Buffer:	Supplied at 0.5 mg/mL in Tris saline, 0.02 % sodium azide, pH 7.3 with 0.5 % bovine serum albumin.
Preservative:	Sodium azide
Precaution of Use:	This product contains Sodium azide: a POISONOUS AND HAZARDOUS SUBSTANCE which should be handled by trained staff only.
Handling Advice:	Minimize freezing and thawing.
Storage:	-20 °C
Storage Comment:	Aliquot and store at -20°C, with minimal freeze/thawing. A working aliquot may be refrigerated at 4°C for a few weeks and still remain viable.



#### Immunohistochemistry

**Image 1.** ABIN190832 (4μg/ml) staining of paraffin embedded Human Lung. Microwaved antigen retrieval with citrate buffer pH 6, HRP-staining.



**Image 2.** ABIN190832 (0.5μg/ml) staining of Human Heart lysate (35μg protein in RIPA buffer). Primary incubation was 1 hour. Detected by chemiluminescence.