

Datasheet for ABIN190834

**anti-ASS1 antibody (Internal Region)**

5 Images

1 Publication

[Go to Product page](#)

## Overview

Quantity:	100 µg
Target:	ASS1
Binding Specificity:	Internal Region
Reactivity:	Human, Mouse, Rat
Host:	Goat
Clonality:	Polyclonal
Conjugate:	This ASS1 antibody is un-conjugated
Application:	Western Blotting (WB), ELISA, Immunohistochemistry (IHC), Flow Cytometry (FACS), Immunofluorescence (IF)

## Product Details

Purpose:	Argininosuccinate synthetase 1
Immunogen:	C-ENPKNQAPPGLYTKTQD
Sequence:	ENPKNQAPPG LYTKTQD
Isotype:	IgG
Specificity:	The variants represent identical protein (NP_000041.2 and NP_446464.1).
Cross-Reactivity:	Cow, Dog, Human, Mouse, Rat
Purification:	Purified from goat serum by ammonium sulphate precipitation followed by antigen affinity chromatography using the immunizing peptide.
Grade:	Verified

## Target Details

Target:	ASS1
Alternative Name:	ASS1 ( <a href="#">ASS1 Products</a> )
Background:	Argininosuccinate synthetase 1, ASS, ASS1, CTLN1, citrulline--aspartate ligase
Gene ID:	445, 11898, 25698
NCBI Accession:	<a href="#">NP_000041</a> , <a href="#">NP_446464</a>
Pathways:	<a href="#">Response to Growth Hormone Stimulus</a> , <a href="#">Cellular Response to Molecule of Bacterial Origin</a>

## Application Details

Application Notes:	<p>Immunohistochemistry: In paraffin embedded Human Kidney shows textured cytoplasm staining in PCT. Recommended concentration: 2-4 µg/mL. Paraffin embedded Human Liver. Recommended concentration: 2.5 µg/mL.</p> <p>Western Blot: Approx 45 kDa band observed in lysates of cell lines A431 and NIH3T3 and approx.48 kDa in Human and Rat Kidney and in Mouse Liver lysates (calculated MW of 46.5 kDa according to Human NP_000041.2 and Rat NP_037289.1, and 46.6 kDa according to Peptide ELISA: antibody detection limit dilution 1:64000.</p>
Comment:	<p><b>Immunofluorescence:</b> Strong expression of the protein seen in the cytoplasm of HeLa cells. Recommended concentration: 10µg/ml.</p> <p><b>Flow Cytometry:</b> Flow cytometric analysis of A431 cells. Recommended concentration: 10ug/ml.&lt;</p>
Restrictions:	For Research Use only

## Handling

Format:	Liquid
Concentration:	0.5 mg/mL
Buffer:	Supplied at 0.5 mg/mL in Tris saline, 0.02 % sodium azide, pH 7.3 with 0.5 % bovine serum albumin.
Preservative:	Sodium azide
Precaution of Use:	This product contains Sodium azide: a POISONOUS AND HAZARDOUS SUBSTANCE which should be handled by trained staff only.
Handling Advice:	Minimize freezing and thawing.

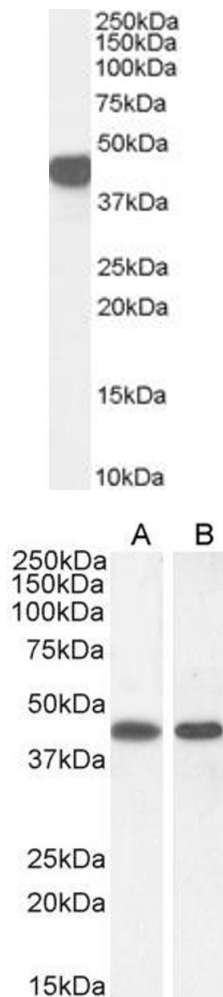
## Handling

Storage:	-20 °C
Storage Comment:	Aliquot and store at -20°C, with minimal freeze/thawing. A working aliquot may be refrigerated at 4°C for a few weeks and still remain viable.

## Publications

Product cited in:	Corbin, Pendleton, Solomonson, Eichler: "Phosphorylation of argininosuccinate synthase by protein kinase A." in: <b>Biochemical and biophysical research communications</b> , Vol. 377, Issue 4, pp. 1042-6, (2008) ( <a href="#">PubMed</a> ).
-------------------	---

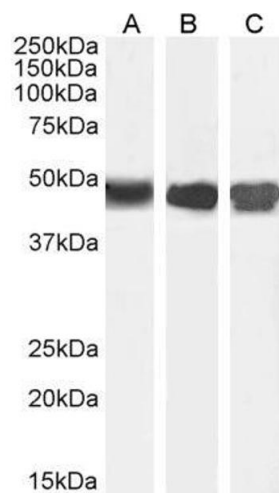
## Images



**Image 1.** ABIN190834 (0.03µg/ml) staining of Human Kidney lysate (35µg protein in RIPA buffer). Primary incubation was 1 hour. Detected by chemiluminescence.

### Western Blotting

**Image 2.** ABIN190834 (0.3µg/ml) staining of A431 (A) and (1ug/ml) NIH3T3(B) cell lysate (35µg protein in RIPA buffer). Detected by chemiluminescence.



**Western Blotting**

**Image 3.** ABIN190834 (0.01µg/ml) staining of Human Kidney (A) Mouse Liver (B) and (0.03ug/ml) Rat Kidney (C) lysate (35µg protein in RIPA buffer). Detected by chemiluminescence.

Please check the [product details page](#) for more images. Overall 5 images are available for ABIN190834.