

Datasheet for ABIN190837

anti-GPX3 antibody (Internal Region)

4 Images

[Go to Product page](#)

Overview

Quantity:	100 µg
Target:	GPX3
Binding Specificity:	Internal Region
Reactivity:	Mouse, Human
Host:	Goat
Clonality:	Polyclonal
Application:	Western Blotting (WB), Immunohistochemistry (IHC), ELISA

Product Details

Purpose:	GPX3
Immunogen:	Peptide with sequence C-NQFGKQEPGENSE, from the internal region of the protein sequence according to NP_002075.2.
Sequence:	NQFGKQEPGE NSE
Isotype:	IgG
Specificity:	This antibody may cross-react with epididymis-specific GPX5 and olfactory epithelium-specific GPX6
Cross-Reactivity:	Dog, Human, Mouse, Pig, Rat
Purification:	Purified from goat serum by ammonium sulphate precipitation followed by antigen affinity chromatography using the immunizing peptide.
Grade:	Verified

Target Details

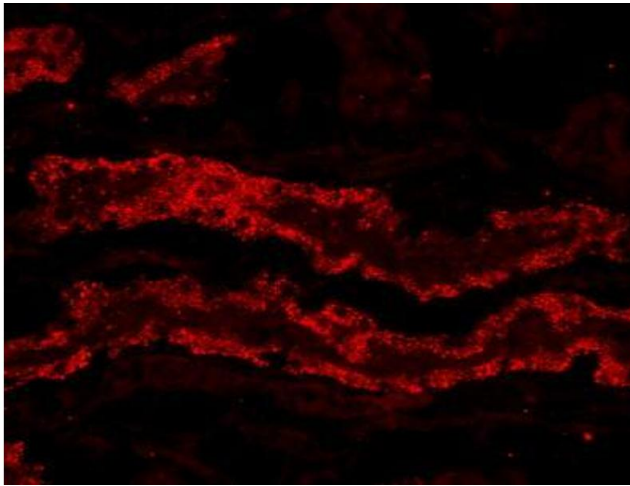
Target:	GPX3
Alternative Name:	GPX3 (GPX3 Products)
Background:	GPX3, glutathione peroxidase 3 (plasma), GPx-P, GSHPx-3, GSHPx-P , extracellular glutathione peroxidase, plasma glutathione peroxidase 3
Gene ID:	2878, 14778, 64317
NCBI Accession:	NP_002075
Pathways:	Thyroid Hormone Synthesis

Application Details

Application Notes:	Immunohistochemistry: Paraffin embedded Human Kidney. Recommended concentration: 3-5 µg/mL. Western Blot: Approx 26 kDa band observed in Mouse Heart lysates (calculated MW of 27.7 kDa according to Mouse NP_001077398.1 [isoform1] and 25.4 kDa according to Mouse NP_032187.2 [isoform 2]). Recommended concentration: 1-3 µg/mL. Primary incubation 1 hou Peptide ELISA: antibody detection limit dilution 1:8000.
Restrictions:	For Research Use only

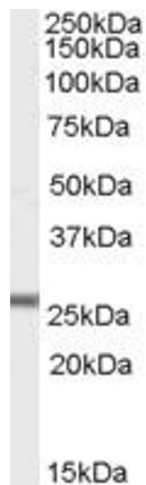
Handling

Format:	Liquid
Concentration:	0.5 mg/mL
Buffer:	Supplied at 0.5 mg/mL in Tris saline, 0.02 % sodium azide, pH 7.3 with 0.5 % bovine serum albumin.
Preservative:	Sodium azide
Precaution of Use:	This product contains Sodium azide: a POISONOUS AND HAZARDOUS SUBSTANCE which should be handled by trained staff only.
Handling Advice:	Minimize freezing and thawing.
Storage:	-20 °C
Storage Comment:	Aliquot and store at -20°C, with minimal freeze/thawing. A working aliquot may be refrigerated at 4°C for a few weeks and still remain viable.



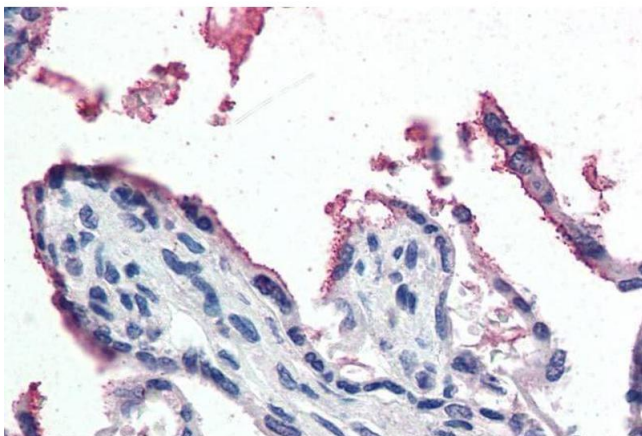
Immunofluorescence

Image 1. ABIN190837 (20 µg/ml) staining of PFA-perfused cryosection of Porcine Kidney. Microwave antigen retrieval with citrate buffer pH 3, CY3-staining. Data obtained from Dr. Hrvoje Brzica, University of Zagreb, Croatia.



Western Blotting

Image 2. ABIN190837 (1 µg/ml) staining of Mouse Heart lysate (35 µg protein in RIPA buffer). Detected by chemiluminescence.



Immunohistochemistry

Image 3. ABIN190837 (5 µg/ml) staining of paraffin embedded Human Placenta. Steamed antigen retrieval with citrate buffer pH 6, AP-staining.

Please check the [product details page](#) for more images. Overall 4 images are available for ABIN190837.