

Datasheet for ABIN190839

**anti-Latexin antibody (C-Term)**

2 Images

2 Publications

[Go to Product page](#)

## Overview

Quantity:	100 µg
Target:	Latexin (LXN)
Binding Specificity:	C-Term
Reactivity:	Human, Mouse, Rat
Host:	Goat
Clonality:	Polyclonal
Conjugate:	This Latexin antibody is un-conjugated
Application:	Western Blotting (WB), ELISA, Immunohistochemistry (IHC), Immunofluorescence (IF)

## Product Details

Purpose:	Latexin
Immunogen:	Peptide with sequence C-QYGTKVKHNSRLPKE, from the C Terminus of the protein sequence according to NP_064554.2.
Sequence:	QYGTKVKHNS RLPKE
Isotype:	IgG
Cross-Reactivity:	Dog, Human, Mouse, Rat
Purification:	Purified from goat serum by ammonium sulphate precipitation followed by antigen affinity chromatography using the immunizing peptide.
Grade:	Verified

## Target Details

Target:	Latexin (LXN)
Alternative Name:	LXN ( <a href="#">LXN Products</a> )
Background:	Latexin, latexin protein, LXN, ECI, TCI
Gene ID:	56925, 17035, 59073
NCBI Accession:	<a href="#">NP_064554</a>

## Application Details

Application Notes:	<p>Immunohistochemistry: This antibody has been successfully used in IHC-P for mouse bones as described in the following paper: Kadouchi et al, Biochem Biophys Res Commun. 2009 Jan 16,378(3):600-4, PMID: 19059214.</p> <p>Western Blot: Approx 28 kDa band observed in lysates of Human Brain (Cerebellum), Mouse Brain and Rat Brain (calculated MW of 25.8 kDa according to NP_064554.2). Recommended concentration: 0.3-1 µg/mL.</p> <p>Peptide ELISA: antibody detection limit dilution 1:128000.</p>
Restrictions:	For Research Use only

## Handling

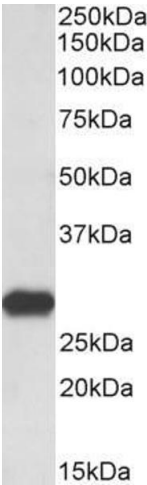
Format:	Liquid
Concentration:	0.5 mg/mL
Buffer:	Supplied at 0.5 mg/mL in Tris saline, 0.02 % sodium azide, pH 7.3 with 0.5 % bovine serum albumin.
Preservative:	Sodium azide
Precaution of Use:	This product contains Sodium azide: a POISONOUS AND HAZARDOUS SUBSTANCE which should be handled by trained staff only.
Handling Advice:	Minimize freezing and thawing.
Storage:	-20 °C
Storage Comment:	Aliquot and store at -20°C, with minimal freeze/thawing. A working aliquot may be refrigerated at 4°C for a few weeks and still remain viable.

Publications

Product cited in: Mitsunaga, Kikuchi, Wada, Furukawa: "Latexin regulates the abundance of multiple cellular proteins in hematopoietic stem cells." in: **Journal of cellular physiology**, Vol. 227, Issue 3, pp. 1138-47, (2012) ([PubMed](#)).

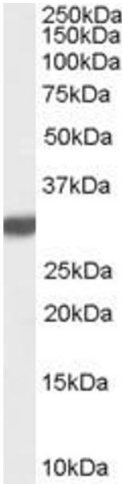
Kadouchi, Sakamoto, Tangjiao, Murakami, Kobayashi, Hoshino, Yamaguchi: "Latexin is involved in bone morphogenetic protein-2-induced chondrocyte differentiation." in: **Biochemical and biophysical research communications**, Vol. 378, Issue 3, pp. 600-4, (2008) ([PubMed](#)).

Images



Western Blotting

**Image 1.** ABIN190839 (0.3µg/ml) staining of Rat Brain lysate (35µg protein in RIPA buffer). Primary incubation was 1 hour. Detected by chemiluminescence.



**Image 2.** ABIN190839 (0.1µg/ml) staining of Rat Brain lysate (35µg protein in RIPA buffer). Primary incubation was 1 hour. Detected by chemiluminescence.