

Datasheet for ABIN190841
anti-Kallikrein 5 antibody (Internal Region)[Go to Product page](#)

2 Images

Overview

Quantity:	100 µg
Target:	Kallikrein 5 (KLK5)
Binding Specificity:	Internal Region
Reactivity:	Human, Mouse, Rat
Host:	Goat
Clonality:	Polyclonal
Conjugate:	This Kallikrein 5 antibody is un-conjugated
Application:	Western Blotting (WB), ELISA

Product Details

Purpose:	KLK5
Immunogen:	Peptide with sequence KAGRDSQGD, from the internal region of the protein sequence according to NP_036559.1.
Sequence:	KAGRDSQGD
Isotype:	IgG
Specificity:	Reported variants represent identical protein (NP_036559.1, NP_001070959.1, NP_001070960.1).
Cross-Reactivity:	Cow, Dog, Human, Rat
Purification:	Purified from goat serum by ammonium sulphate precipitation followed by antigen affinity chromatography using the immunizing peptide.

Product Details

Grade: Verified

Target Details

Target: Kallikrein 5 (KLK5)

Alternative Name: KLK5 ([KLK5 Products](#))

Background: KLK5, kallikrein-related peptidase 5, KLK-L2, KLKL2, SCTE, kallikrein 5, kallikrein-like protein 2, stratum corneum tryptic enzyme

Gene ID: 25818

NCBI Accession: [NP_036559](#)

Pathways: [Complement System](#), [Regulation of G-Protein Coupled Receptor Protein Signaling](#)

Application Details

Application Notes: Western Blot: Approx 35 kDa band observed in Human Brain (Cerebellum), Mouse Brain and Rat Brain lysates (calculated MW of 32.0 kDa according to NP_036559.1). Recommended concentration: 1-3 µg/mL.
Peptide ELISA: antibody detection limit dilution 1:1000.

Restrictions: For Research Use only

Handling

Format: Liquid

Concentration: 0.5 mg/mL

Buffer: Supplied at 0.5 mg/mL in Tris saline, 0.02 % sodium azide, pH 7.3 with 0.5 % bovine serum albumin.

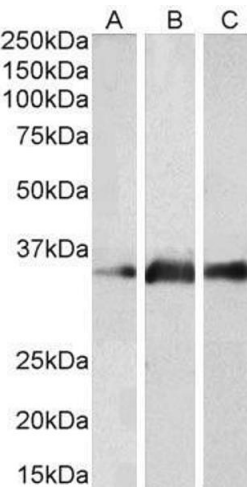
Preservative: Sodium azide

Precaution of Use: This product contains Sodium azide: a POISONOUS AND HAZARDOUS SUBSTANCE which should be handled by trained staff only.

Handling Advice: Minimize freezing and thawing.

Storage: -20 °C

Storage Comment: Aliquot and store at -20°C, with minimal freeze/thawing. A working aliquot may be refrigerated at 4°C for a few weeks and still remain viable.



Western Blotting

Image 1. ABIN190841 (2µg/ml) staining of Human Brain (Cerebellum) (A), Mouse Brain (B) and Rat Brain (C) lysates (35µg protein in RIPA buffer). Primary incubation was 1 hour. Detected by chemiluminescence.



Western Blotting

Image 2. ABIN190841 (0.1µg/ml) staining of Human Prostate lysate (35µg protein in RIPA buffer). Primary incubation was 1 hour. Detected by chemiluminescence.