

Datasheet for ABIN190842
anti-Kallikrein 2 antibody (Internal Region)[Go to Product page](#)

7 Images

Overview

Quantity:	100 µg
Target:	Kallikrein 2 (KLK2)
Binding Specificity:	Internal Region
Reactivity:	Human
Host:	Goat
Clonality:	Polyclonal
Conjugate:	This Kallikrein 2 antibody is un-conjugated
Application:	Western Blotting (WB), ELISA, Immunohistochemistry (IHC)

Product Details

Purpose:	KLK2
Immunogen:	Peptide with sequence C-KHQLRPDEDSSHD, from the internal region of the protein sequence according to NP_005542.1, NP_001002231.1.
Sequence:	KHQLRPDED SSHD
Isotype:	IgG
Specificity:	This antibody is expected to recognize both reported isoforms (NP_005542.1, NP_001002231.1).
Cross-Reactivity:	Human
Purification:	Purified from goat serum by ammonium sulphate precipitation followed by antigen affinity chromatography using the immunizing peptide.

Product Details

Grade: Verified

Target Details

Target:	Kallikrein 2 (KLK2)
Alternative Name:	KLK2 (KLK2 Products)
Background:	KLK2, kallikrein-related peptidase 2, KLK2A2, MGC12201, hK2 , glandular kallikrein 2, kallikrein 2, prostatic
Gene ID:	3817
NCBI Accession:	NP_005542 , NP_001002231
Pathways:	Complement System

Application Details

Application Notes:	Immunohistochemistry: Paraffin embedded Human Prostate. Recommended concentration: 2.5-8 µg/mL. Western Blot: Approx 26 kDa band observed in lysates of cell line HeLa, which was successfully blocked by incubation with the immunizing peptide (calculated MW of 28.7 according to NP_005542.1 and 24.7 kDa according to NP_001002231.1). Recommended concen Peptide ELISA: antibody detection limit dilution 1:64000.
Restrictions:	For Research Use only

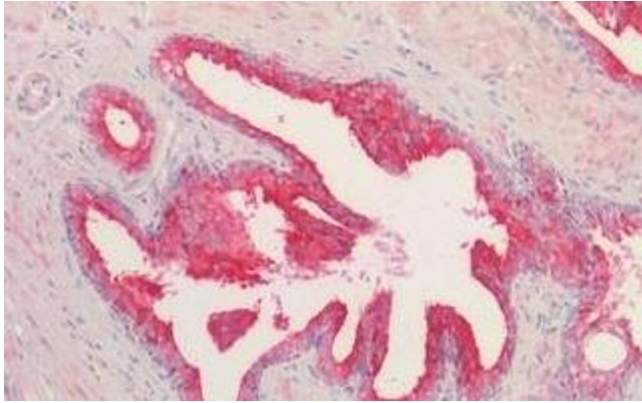
Handling

Format:	Liquid
Concentration:	0.5 mg/mL
Buffer:	Supplied at 0.5 mg/mL in Tris saline, 0.02 % sodium azide, pH 7.3 with 0.5 % bovine serum albumin.
Preservative:	Sodium azide
Precaution of Use:	This product contains Sodium azide: a POISONOUS AND HAZARDOUS SUBSTANCE which should be handled by trained staff only.
Handling Advice:	Minimize freezing and thawing.
Storage:	-20 °C

Handling

Storage Comment: Aliquot and store at -20°C, with minimal freeze/thawing. A working aliquot may be refrigerated at 4°C for a few weeks and still remain viable.

Images

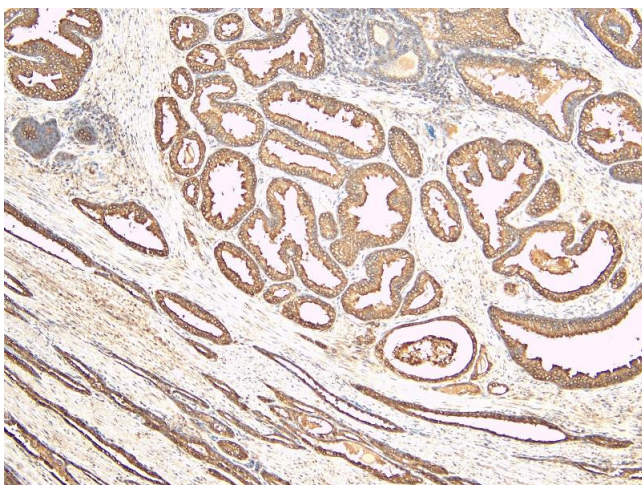


Immunohistochemistry

Image 1. (ABIN190842) (2.5 µg/mL) staining of paraffin embedded Human Prostate. Steamed antigen retrieval with citrate buffer pH 6, AP-staining.



Image 2. ABIN190842 (0.1 µg/ml) staining of Human Prostate lysate (35 µg protein in RIPA buffer). Primary incubation was 1 hour. Detected by chemiluminescence.



Western Blotting

Image 3. ABIN190842 (6 µg/ml) staining of paraffin embedded Human Prostate. Heat induced antigen retrieval with citrate buffer pH 6, HRP-staining.

Please check the [product details page](#) for more images. Overall 7 images are available for ABIN190842.