

Datasheet for ABIN190848
anti-Neurologin 2 antibody (Internal Region)

5 Images

1 Publication

[Go to Product page](#)

Overview

Quantity:	100 µg
Target:	Neurologin 2 (NLGN2)
Binding Specificity:	Internal Region
Reactivity:	Human
Host:	Goat
Clonality:	Polyclonal
Conjugate:	This Neurologin 2 antibody is un-conjugated
Application:	Western Blotting (WB), ELISA, Immunofluorescence (IF), Flow Cytometry (FACS)

Product Details

Purpose:	Neurologin 2
Immunogen:	Peptide with sequence C-NPPDTDIRDPGKK, from the internal region of the protein sequence according to NP_065846.1.
Sequence:	NPPDTDIRD P GKK
Isotype:	IgG
Cross-Reactivity:	Dog, Human, Mouse, Rat
Purification:	Purified from goat serum by ammonium sulphate precipitation followed by antigen affinity chromatography using the immunizing peptide.
Grade:	Verified

Target Details

Target:	Neurologin 2 (NLGN2)
Alternative Name:	NLGN2 (NLGN2 Products)
Background:	Neurologin 2 , KIAA1366, NLGN2
Gene ID:	57555, 216856, 117096
NCBI Accession:	NP_065846
Pathways:	Cell-Cell Junction Organization , Synaptic Membrane

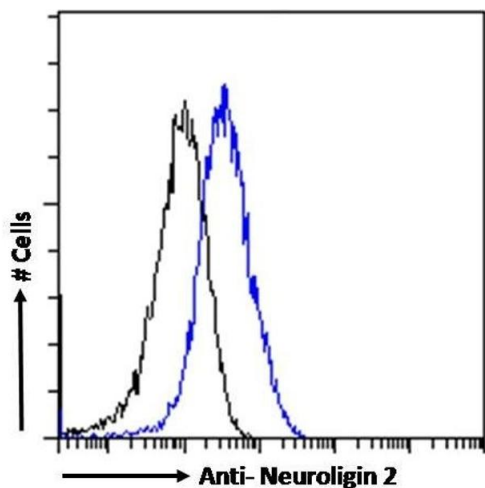
Application Details

Application Notes:	Western Blot: Approx 90 kDa band observed in Human Pancrease lysates (calculated MW of 90.8 kDa according to NP_065846.1). Recommended concentration: 2-3 µg/mL. Primary incubation 1 hour at room temperature. Preliminary testing was unsuccessful on Mouse and Peptide ELISA: antibody detection limit dilution 1:4000.
Comment:	Immunofluorescence: Strong expression of the protein seen in the mitochondria/cytoplasm of U2OS cells. Recommended concentration: 10µg/ml. Flow Cytometry: Flow cytometric analysis of MCF7 cells. Recommended concentrati
Restrictions:	For Research Use only

Handling

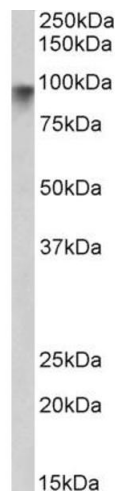
Format:	Liquid
Concentration:	0.5 mg/mL
Buffer:	Supplied at 0.5 mg/mL in Tris saline, 0.02 % sodium azide, pH 7.3 with 0.5 % bovine serum albumin.
Preservative:	Sodium azide
Precaution of Use:	This product contains Sodium azide: a POISONOUS AND HAZARDOUS SUBSTANCE which should be handled by trained staff only.
Handling Advice:	Minimize freezing and thawing.
Storage:	-20 °C
Storage Comment:	Aliquot and store at -20°C, with minimal freeze/thawing. A working aliquot may be refrigerated at 4°C for a few weeks and still remain viable.

Product cited in: Zelano, Berg, Thams, Hailer, Cullheim: "SynCAM1 expression correlates with restoration of central synapses on spinal motoneurons after two different models of peripheral nerve injury." in: **The Journal of comparative neurology**, Vol. 517, Issue 5, pp. 670-82, (2009) ([PubMed](#)).



Flow Cytometry

Image 1. (ABIN190848) Flow cytometric analysis of paraformaldehyde fixed MCF7 cells (blue line), permeabilized with 0.5 % Triton. Primary incubation 1hr (10 µg/mL) followed by Alexa Fluor 488 secondary antibody (1 µg/mL). IgG control: Unimmunized goat IgG (black line) fol



Western Blotting

Image 2. ABIN190848 (2µg/ml) staining of Human Pancrease lysate (35µg protein in RIPA buffer). Detected by chemiluminescence.



Image 3. ABIN190848 (0.1µg/ml) staining of Human Pancreas lysate (35µg protein in RIPA buffer). Primary incubation was 1 hour. Detected by chemiluminescence.

Images

Please check the [product details page](#) for more images. Overall 5 images are available for ABIN190848.