

Datasheet for ABIN190854

anti-Actl7b antibody (Internal Region)[Go to Product page](#)**1** Image

Overview

Quantity:	100 µg
Target:	Actl7b
Binding Specificity:	Internal Region
Reactivity:	Rat
Host:	Goat
Clonality:	Polyclonal
Conjugate:	This Actl7b antibody is un-conjugated
Application:	Western Blotting (WB), ELISA

Product Details

Purpose:	Actin-like 7B (mouse)
Immunogen:	Peptide with sequence C-DELHVDYELPDGK, from the internal region of the protein sequence according to NP_079547.1.
Sequence:	DELHVDYELP DGK
Isotype:	IgG
Specificity:	This antibody is not expected to cross-react with Actin-like 7A.
Cross-Reactivity:	Mouse, Rat
Purification:	Purified from goat serum by ammonium sulphate precipitation followed by antigen affinity chromatography using the immunizing peptide.
Grade:	Verified

Target Details

Target:	Actl7b
Alternative Name:	Actl7b (Actl7b Products)
Background:	Actin-like 7B, ACTL7B, MGC151192, MGC151194, Tact1, actin-like 7-beta, t-actin 1
Gene ID:	11471, 313183
NCBI Accession:	NP_079547

Application Details

Application Notes:	Western Blot: Approx 45 kDa band observed in Rat Testis lysates (calculated MW of 45.5 kDa according to Rat NP_001020588.1 and 45.6 kDa according to Mouse NP_079547.1). Recommended concentration: 0.5-1.5 µg/mL. An additional band of unknown identity was also observed. Peptide ELISA: antibody detection limit dilution 1:32000.
Restrictions:	For Research Use only

Handling

Format:	Liquid
Concentration:	0.5 mg/mL
Buffer:	Supplied at 0.5 mg/mL in Tris saline, 0.02 % sodium azide, pH 7.3 with 0.5 % bovine serum albumin.
Preservative:	Sodium azide
Precaution of Use:	This product contains Sodium azide: a POISONOUS AND HAZARDOUS SUBSTANCE which should be handled by trained staff only.
Handling Advice:	Minimize freezing and thawing.
Storage:	-20 °C
Storage Comment:	Aliquot and store at -20°C, with minimal freeze/thawing. A working aliquot may be refrigerated at 4°C for a few weeks and still remain viable.

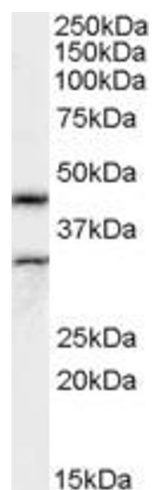


Image 1. ABIN190854 (0.5µg/ml) staining of Rat Testes lysate (35µg protein in RIPA buffer). Primary incubation was 1 hour. Detected by chemiluminescence.